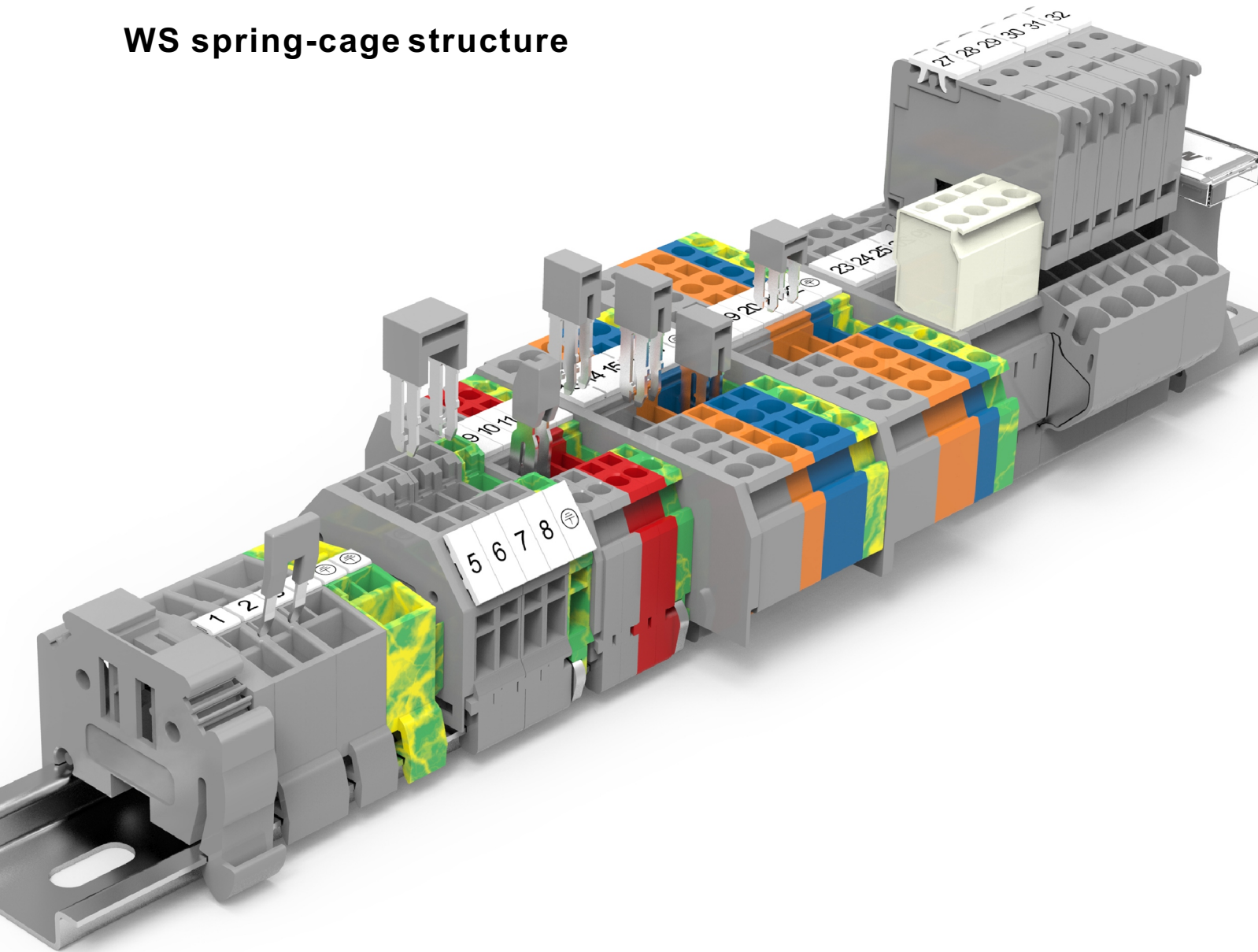
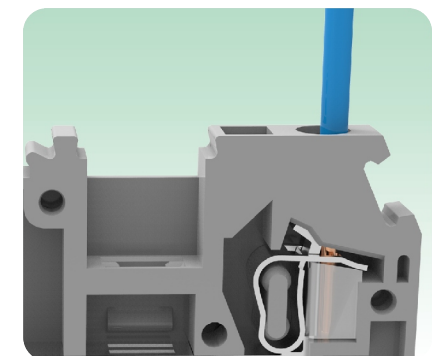
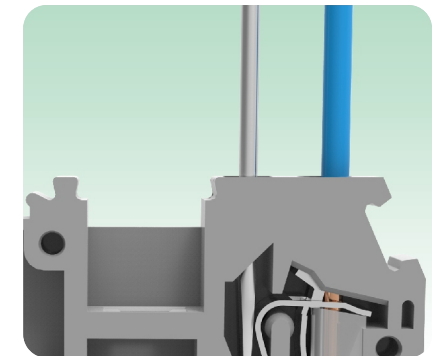
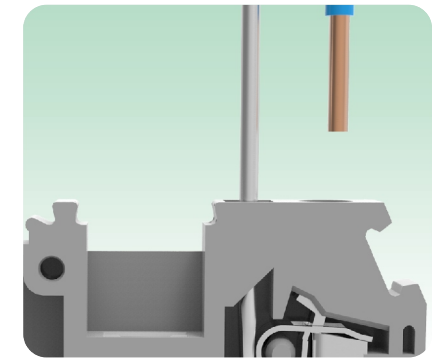
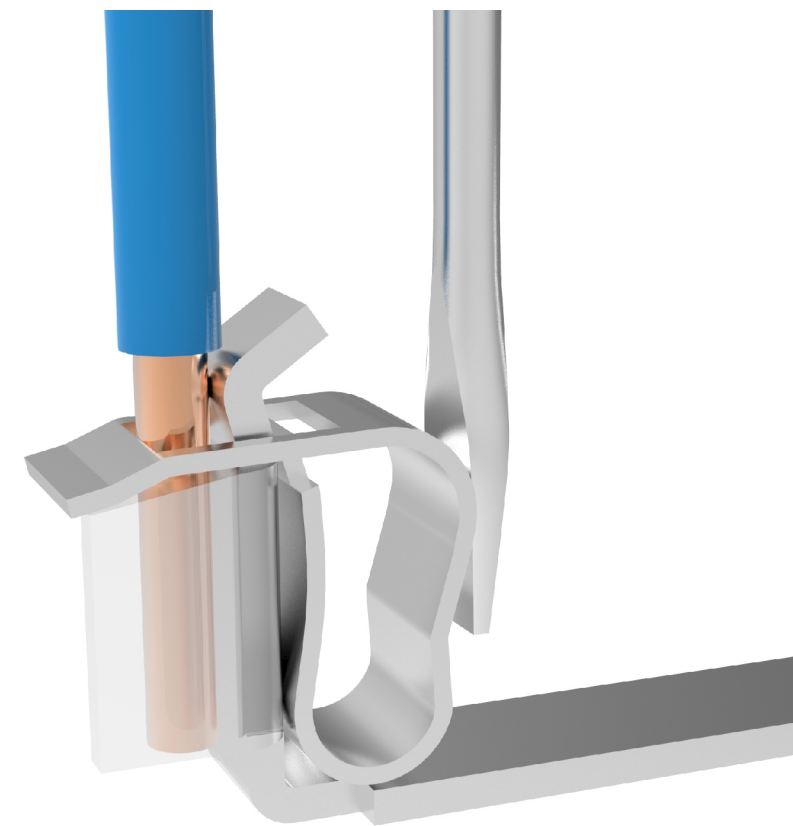


WS spring-cage structure



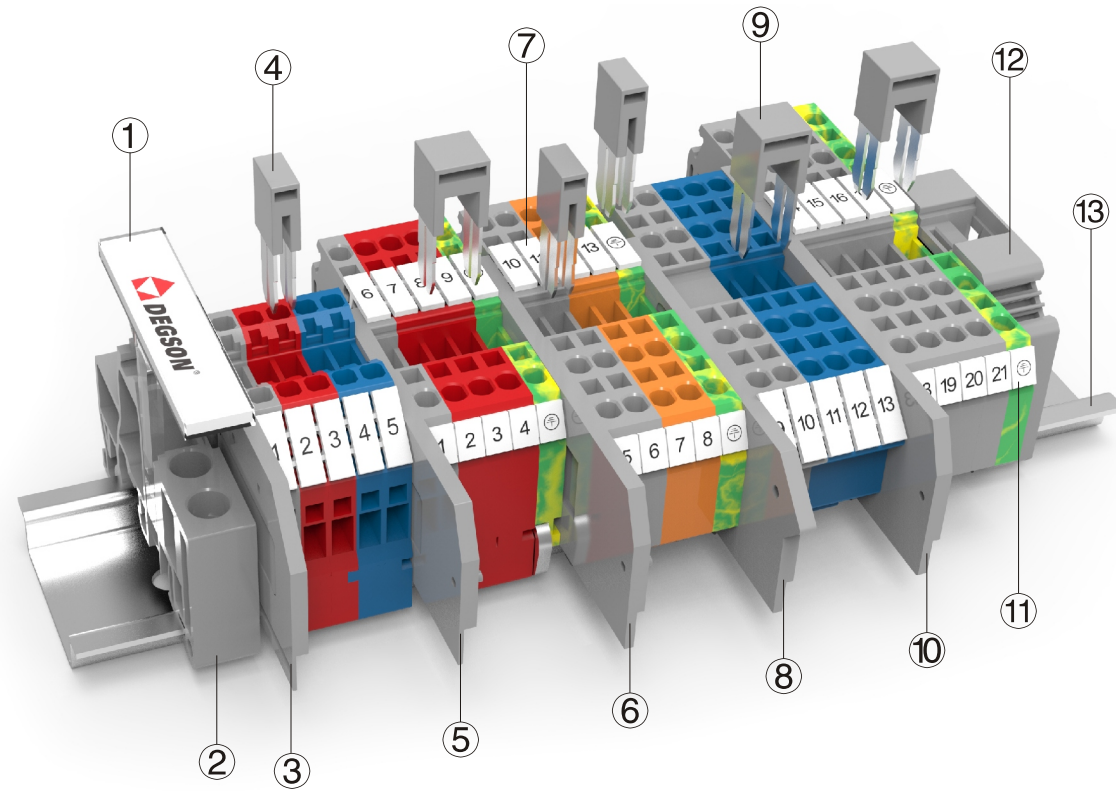
Feature

- Spring-cage connection technology with excellent anti-vibration.
- Just use a common slotted screwdriver to realize wire connection and release.
- Unique pluggable jumper, high circuit connection efficiency.
- It has a complete product line to meet different customer needs.
- Optional marker to avoid wire mis-inserting.

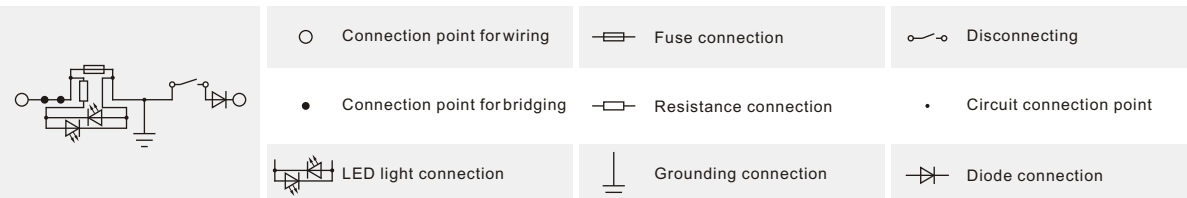


The WS spring-cage connection technology terminal block adopts imported stainless steel spring, and the unique production process can ensure excellent resilience and vibration resistance of the wiring. High-precision copper alloy conductors provide the lowest temperature rise, ensuring reliable and safe connections. PA66's plastic parts can meet the working environment of -40°C to 105°C, and all WS series of din rail products are in line with UL94 V0 flame retardant grade.

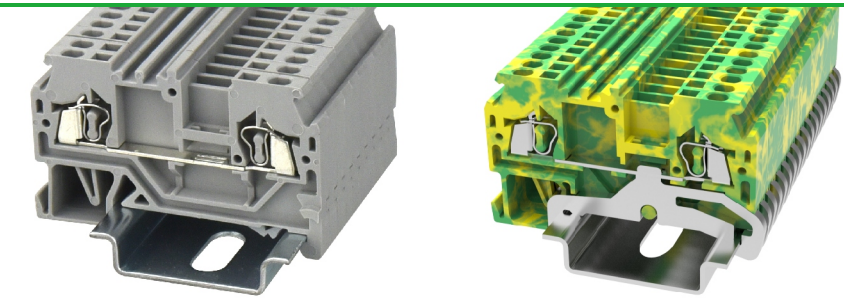
The spring-cage structure design makes the wiring efficiency higher than screw type. People just use a slotted screwdriver to connect solid wire or stranded wire processed by terminals.



Description	Part No.	Remark
① Terminal strip marker carrier	DLM2-01P-17-00A(H)	Suitable for E-PC, use for marking
② End stopper	E-PC-01P-11-1000A(H)	Fixing products on NS35 DIN rail
③ End cover	D-WS1.5-SD-01P-11-00A(H)	End cover is used for WS1.5-SD
④ Adjacent jumper	WFA1.5-02P-11-00A(H)	02P bridge, use for WS1.5 series
⑤ End cover	D-WS1.5-01P-11-00A(H)	End cover is used for WS1.5&WS1.5-PE
⑥ End cover	D-WS1.5-TW-01P-11-00A(H)	End cover is used for WS1.5-TW&WS1.5-TW-PE
⑦ Marker	ZB4-10P-19-00A(H)	Marker is used for the top of WS1.5 series
⑧ End cover	D-WS1.5-QU-01P-11-100A(H)	End cover is used for WS1.5-QU-100A(H)
⑨ Alternate jumper	WFB1.5-02P-11-00A(H)	02P bridge, use for WS1.5 series
⑩ End cover	D-WS1.5-QU-01P-11-00A(H)	End cover is used for WS1.5-QU-100A(H)
⑪ Marker	DEK4-50P-19-00A(H)	Marker is used for the side of WS1.5 series
⑫ End stopper	E-WS-01P-11-00A(H)	Fixing products on NS35 DIN rail
⑬ DIN rail	NS35/7.5-0150-00A(H)	NS35 DIN rail

Circuit diagram

Spring-cage connection technology

Feed-through, multi-conductor and ground terminal blocks


WS 1.5

WS 1.5-PE

Notes: For additional accessories and operating instruction, see page 29.

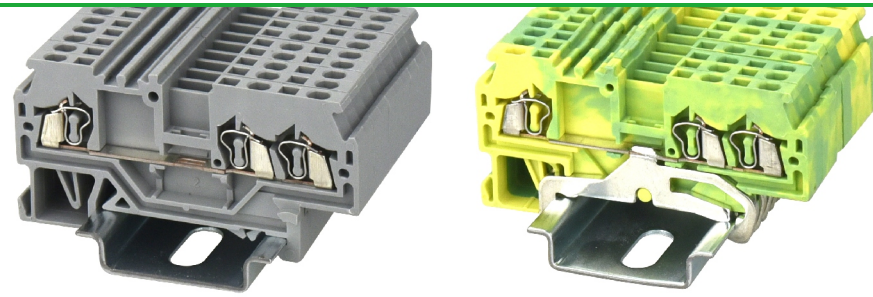
CE ENE RoHS REACH

CE ENE RoHS REACH

Dimension	WS 1.5				WS 1.5-PE				
	Width/Length/Height(NS35/7.5&NS35/15) mm		4/51.8/34.55(42.05)		4/51.8/34.55(42.05)				
Electrical Parameter	IEC IEC60947-7-1		UL UL1059		IEC IEC60947-7-2		UL UL1059		
	Rated voltage	V		800		600		/	
Rated current	A		18		10		/		
Wire range	mm ² /AWG		0.2-1.5		28-16		0.2-1.5 28-16		
Rated surge voltage/Degree of pollution	KV/-		8/3		8/3				
Overvoltage category/Insulation material group	-/-		III / I		III / I				
Connection capacity	Solid		Stranded		Ferrule (with and without plastic sleeve)				
	1 conductor		mm ²		0.2-1.5 0.2-1.5 0.2-1.5 0.2-0.5		0.2-1.5 0.2-1.5 0.2-1.5 0.2-0.5		
2 conductors with same cross section, stranded, TWIN ferrules with plastic sleeve		mm ²		— — — 0.5		— — — 0.5			
General information									
Insulation material/Flammability rating(according to UL 94)			PA/V0			PA/V0			
Operation temperature			°C (°F)			-40(-40)~105(221)			
Stripping length			mm			8-9			
Color			Gray (customization demand is available)			Green-yellow			
Slotted screwdriver size (Blade thickness x Width)			mm			0.4x2.5 0.4x2.5			
Accessories									
Adjacent jumper (2P)		WFA1.5		/					
Alternate jumper (2P)		WFB1.5		/					
Staggered jumper (2P)		/		/					
End cover		D-WS1.5		D-WS1.5					
Marker (Top)		ZB4&WB4		ZB4&WB4					
Marker (Side)		DEK4		DEK4					
Warning cover		EEA1.5		EEA1.5					
DIN rail		NS35/7.5 & NS35/15 (Steel and Aluminium alloy are optional)		NS35/7.5 & NS35/15 (Steel and Aluminium alloy are optional)					
End stopper		E-WS&E-PC&E-MK		E-WS&E-PC&E-MK					

Spring-cage connection technology

Feed-through, multi-conductor and ground terminal blocks


WS 1.5-TW

WS 1.5-TW-PE

Notes: For additional accessories and operating instruction, see page 29.

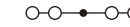
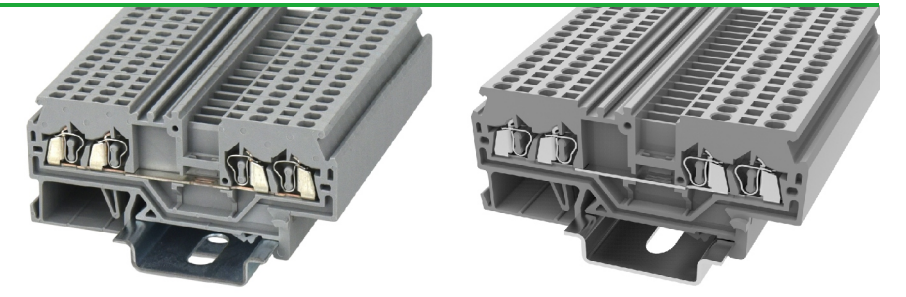
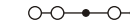
UL US CE ENEC RoHS REACH

CE ENEC RoHS REACH

Dimension		UL US CE ENEC RoHS REACH				CE ENEC RoHS REACH			
Width/Length/Height(NS35/7.5&NS35/15) mm		4/62.5/34.55(42.05)				4/62.5/34.55(42.05)			
Electrical Parameter		IEC IEC60947-7-1		UL UL1059		IEC IEC60947-7-2		UL UL1059	
Rated voltage	V	800		600		/		/	
Rated current	A	18		10		/		/	
Wire range	mm ² /AWG	0.2-1.5		28-16		0.2-1.5		28-16	
Rated surge voltage/Degree of pollution	KV/-	8/3				8/3			
Overvoltage category/Insulation material group	-/-	III / I				III / I			
Connection capacity		Solid	Stranded	Ferrule (with and without plastic sleeve)		Solid	Stranded	Ferrule (with and without plastic sleeve)	
1 conductor	mm ²	0.2-1.5	0.2-1.5	0.2-1.5	0.2-0.5	0.2-1.5	0.2-1.5	0.2-1.5	0.2-0.5
2 conductors with same cross section, stranded, TWIN ferrules with plastic sleeve	mm ²	—	—	—	0.5	—	—	—	0.5
General information									
Insulation material/Flammability rating(according to UL 94)		PA/V0				PA/V0			
Operation temperature °C (°F)		-40(-40)~105(221)				-40(-40)~105(221)			
Stripping length mm		8-9				8-9			
Color		Gray (customization demand is available)				Green-yellow			
Slotted screwdriver size (Blade thickness x Width) mm		0.4x2.5				0.4x2.5			
Accessories									
Adjacent jumper (2P)		WFA1.5				/			
Alternate jumper (2P)		WFB1.5				/			
Staggered jumper (2P)		/				/			
End cover		D-WS1.5-TW				D-WS1.5-TW			
Marker (Top)		ZB4&WB4				ZB4&WB4			
Marker (Side)		DEK4				DEK4			
Warning cover		EEA1.5				EEA1.5			
DIN rail		NS35/7.5 & NS35/15 (Steel and Aluminium alloy are optional)				NS35/7.5 & NS35/15 (Steel and Aluminium alloy are optional)			
End stopper		E-WS&E-PC&E-MK				E-WS&E-PC&E-MK			

Spring-cage connection technology

Feed-through, multi-conductor and ground terminal blocks


WS 1.5-QU

WS 1.5-QU-100A(H)

Notes: For additional accessories and operating instruction, see page 29.

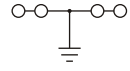
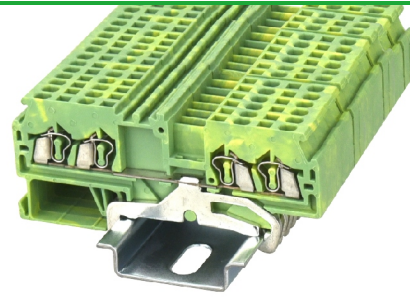
CE ENEC RoHS REACH

CE ENEC RoHS REACH

Dimension		CE ENEC RoHS REACH				CE ENEC RoHS REACH			
Width/Length/Height(NS35/7.5&NS35/15) mm		4/73/34.55(42.05)				4/68/34.55(42.05)			
Electrical Parameter		IEC IEC60947-7-1		UL UL1059		IEC IEC60947-7-1		UL UL1059	
Rated voltage	V	800		600		800		600	
Rated current	A	18		10		18		10	
Wire range	mm ² /AWG	0.2-1.5		28-16		0.2-1.5		28-16	
Rated surge voltage/Degree of pollution	KV/-	8/3				8/3			
Overvoltage category/Insulation material group	-/-	III / I				III / I			
Connection capacity		Solid	Stranded	Ferrule (with and without plastic sleeve)		Solid	Stranded	Ferrule (with and without plastic sleeve)	
1 conductor	mm ²	0.2-1.5	0.2-1.5	0.2-1.5	0.2-0.5	0.2-1.5	0.2-1.5	0.2-1.5	0.2-0.5
2 conductors with same cross section, stranded, TWIN ferrules with plastic sleeve	mm ²	—	—	—	0.5	—	—	—	0.5
General information									
Insulation material/Flammability rating(according to UL 94)		PA/V0				PA/V0			
Operation temperature °C (°F)		-40(-40)~105(221)				-40(-40)~105(221)			
Stripping length mm		8-9				8-9			
Color		Gray (customization demand is available)				Gray (customization demand is available)			
Slotted screwdriver size (Blade thickness x Width) mm		0.4x2.5				0.4x2.5			
Accessories									
Adjacent jumper (2P)		WFA1.5				WFA1.5			
Alternate jumper (2P)		WFB1.5				WFB1.5			
Staggered jumper (2P)		/				/			
End cover		D-WS1.5-QU				D-WS1.5-QU			
Marker (Top)		ZB4&WB4				/			
Marker (Side)		DEK4				ZB4&WB4			
Warning cover		EEA1.5				EEA1.5			
DIN rail		NS35/7.5 & NS35/15 (Steel and Aluminium alloy are optional)				NS35/7.5 & NS35/15 (Steel and Aluminium alloy are optional)			
End stopper		E-WS&E-PC&E-MK				E-WS&E-PC&E-MK			

Spring-cage connection technology

Feed-through, multi-conductor and ground terminal blocks



WS 1.5-QU-PE

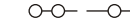
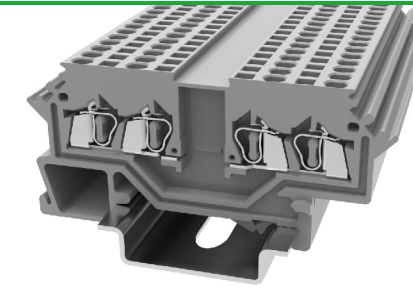
Notes: For additional accessories and operating instruction, see page 29.

CE ENEC RoHS REACH

Dimension					
Width/Length/Height(NS35/7.5&NS35/15) mm		4/73/34.55(42.05)			
Electrical Parameter		IEC IEC60947-7-2	UL UL1059		
Rated voltage	V	/	/		
Rated current	A	/	/		
Wire range	mm ² /AWG	0.2-1.5	28-16		
Rated surge voltage/Degree of pollution	KV/-	8/3			
Overvoltage category/Insulation material group	-/-	III / I			
Connection capacity		Solid	Stranded	Ferrule (with and without plastic sleeve)	
1 conductor	mm ²	0.2-1.5	0.2-1.5	0.2-1.5	0.2-0.5
2 conductors with same cross section, stranded, TWIN ferrules with plastic sleeve	mm ²	—	—	—	0.5
General information					
Insulation material/Flammability rating(according to UL 94)		PA/V0			
Operation temperature	°C (°F)	-40(-40)~105(221)			
Stripping length	mm	8-9			
Color		Green-yellow			
Slotted screwdriver size (Blade thickness x Width) mm		0.4x2.5			
Accessories					
Adjacent jumper (2P)		/			
Alternate jumper (2P)		/			
Staggered jumper (2P)		/			
End cover		D-WS1.5-QU			
Marker (Top)		ZB4&WB4			
Marker (Side)		DEK4			
Warning cover		EEA1.5			
DIN rail		NS35/7.5 & NS35/15 (Steel and Aluminium alloy are optional)			
End stopper		E-WS&E-PC&E-MK			

Spring-cage connection technology

Component terminal blocks



WS 1.5-QU-LD

Notes: For additional accessories and operating instruction, see page 29.

CE ENEC RoHS REACH

Dimension					
Width/Length/Height(NS35/7.5&NS35/15) mm		4/68/34.55(42.05)			
Electrical Parameter		IEC IEC60947-7-1	UL UL1059		
Rated voltage	V	800	600		
Rated current	A	18	10		
Wire range	mm ² /AWG	0.2-1.5	28-16		
Rated surge voltage/Degree of pollution	KV/-	8/3			
Overvoltage category/Insulation material group	-/-	III / I			
Connection capacity		Solid	Stranded	Ferrule (with and without plastic sleeve)	
1 conductor	mm ²	0.2-1.5	0.2-1.5	0.2-1.5	0.2-0.5
2 conductors with same cross section, stranded, TWIN ferrules with plastic sleeve	mm ²	—	—	—	0.5
General information					
Insulation material/Flammability rating(according to UL 94)		PA/V0			
Operation temperature	°C (°F)	-40(-40)~105(221)			
Stripping length	mm	8-9			
Color		Gray (customization demand is available)			
Slotted screwdriver size (Blade thickness x Width) mm		0.4x2.5			
Accessories					
Adjacent jumper (2P)		/			
Alternate jumper (2P)		/			
Staggered jumper (2P)		/			
End cover		D-WS1.5-QU			
Marker (Top)		/			
Marker (Side)		ZB4&WB4			
Warning cover		EEA1.5			
DIN rail		NS35/7.5 & NS35/15 (Steel and Aluminium alloy are optional)			
End stopper		E-WS&E-PC&E-MK			

Spring-cage connection technology

Feed-through, multi-conductor and ground terminal blocks

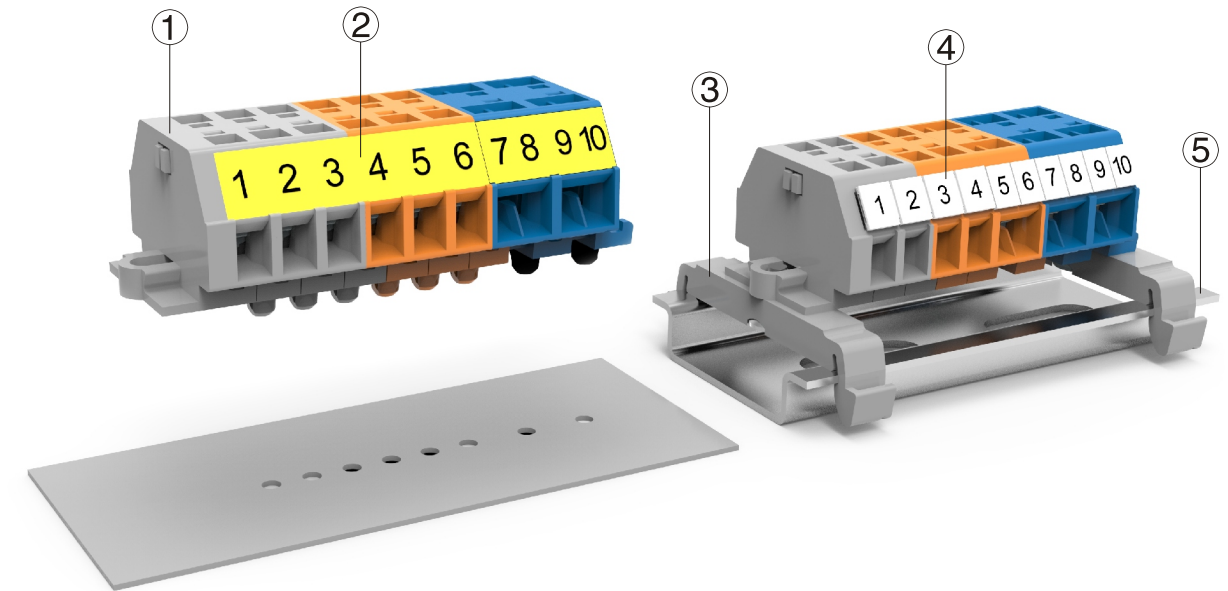


WS 1.5-SD

Notes: For additional accessories and operating instruction, see page 29.

CE ENEC RoHS REACH

Dimension					
Width/Length/Height(NS35/7.5&NS35/15) mm		4/42.5/38(45.5)			
Electrical Parameter		IEC IEC60947-7-1	UL UL1059		
Rated voltage	V	800	600		
Rated current	A	18	10		
Wire range	mm ² /AWG	0.2-1.5	28-16		
Rated surge voltage/Degree of pollution	KV/-	8/3			
Overvoltage category/Insulation material group	-/-	III / I			
Connection capacity		Solid	Stranded	Ferrule (with and without plastic sleeve)	
1 conductor	mm ²	0.2-1.5	0.2-1.5	0.2-1.5	0.2-0.5
2 conductors with same cross section, stranded, TWIN ferrules with plastic sleeve	mm ²	—	—	—	0.5
General information					
Insulation material/Flammability rating(according to UL 94)		PA/V0			
Operation temperature	°C (°F)	-40(-40)~105(221)			
Stripping length	mm	8-9			
Color		Gray (customization demand is available)			
Slotted screwdriver size (Blade thickness x Width) mm		0.4x2.5			
Accessories					
Adjacent jumper (2P)		/			
Alternate jumper (2P)		/			
Staggered jumper (2P)		/			
End cover		D-WS1.5-SD			
Marker (Top)		/			
Marker (Side)		ZB4&WB4			
Warning cover		EEA1.5			
DIN rail		NS35/7.5 & NS35/15 (Steel and Aluminium alloy are optional)			
End stopper		E-WS&E-PC&E-MK			



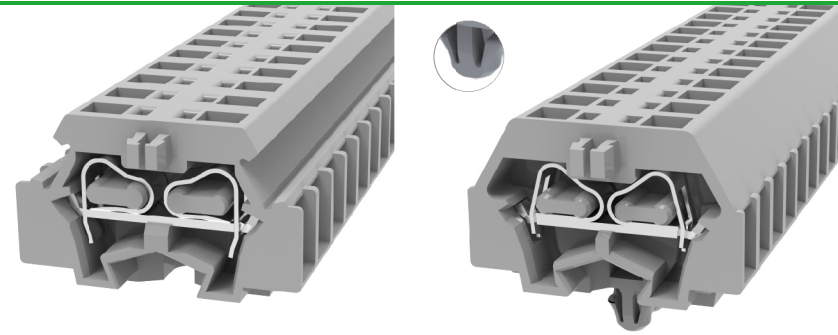
Description	Part No.	Remark
① End cover	D-WS1.5-DB-01P-11-00A(H)	End cover is used for WS1.5-DB/WS1.5T-DB
② Paper label	/	Marker is used for the side of WS1.5-DB-11A/WS1.5T-DB-11A
③ Mounting foot with screw;	WHH-WS1.5-DB-01P-11-00A(H)	For DIN35, can be screwed on terminal blocks with mounting flange
④ Marker	DEK4-50P-19-00A(H)	Marker is used for the side of WS1.5-DB/WS1.5T-DB
⑤ DIN rail	NS35/7.5-0150-00A(H)	NS35 DIN rail

Circuit diagram

	○ Connection point for wiring		Fuse connection		Disconnecting
	● Connection point for bridging		Resistance connection		Circuit connection point
	LED light connection		Grounding connection		Diode connection

Spring-cage connection technology

Feed-through, multi-conductor and ground terminal blocks

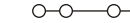
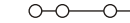
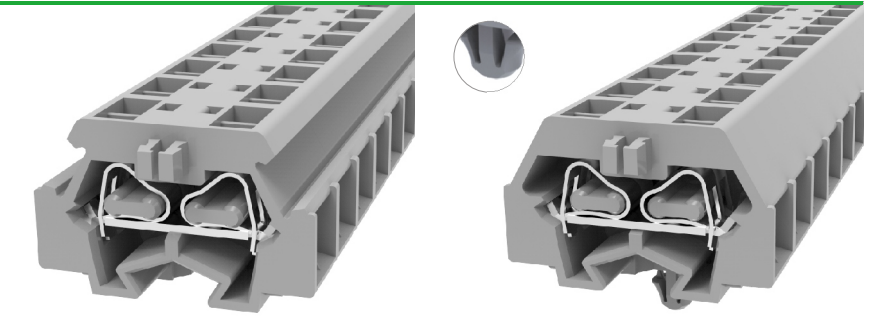

WS 1.5-DB
WS 1.5-DB-11A(H)

Notes: For additional accessories and operating instruction, see page 36.

Dimension									
Width/Length/Height	mm	5/25/17				5/21.5/17			
Electrical Parameter		IEC IEC60947-7-1		UL UL1059		IEC IEC60947-7-1		UL UL1059	
Rated voltage	V	800		300		800		300	
Rated current	A	17.5		10		17.5		10	
Wire range	mm ² /AWG	0.2-1.5		28-16		0.2-1.5		28-16	
Rated surge voltage/Degree of pollution	KV/-	8/3				8/3			
Overvoltage category/Insulation material group	-/-	III / I				III / I			
Connection capacity		Solid	Stranded	Ferrule (with and without plastic sleeve)		Solid	Stranded	Ferrule (with and without plastic sleeve)	
1 conductor	mm ²	0.2-1.5	0.2-1.5	0.2-1.5	0.2-1.0	0.2-1.5	0.2-1.5	0.2-1.5	0.2-1.0
2 conductors with same cross section, stranded, TWIN ferrules with plastic sleeve	mm ²	—	—	—	0.5	—	—	—	0.5
General information									
Insulation material/Flammability rating(according to UL 94)		PA/V0				PA/V0			
Operation temperature	°C (°F)	-40(-40)~105(221)				-40(-40)~105(221)			
Stripping length	mm	8-9				8-9			
Color		Gray (customization demand is available)				Gray (customization demand is available)			
Slotted screwdriver size (Blade thickness x Width)	mm	0.4x2.5				0.4x2.5			
Accessories									
Adjacent jumper (2P)		/				/			
End cover		D-WS1.5-DB				D-WS1.5-DB			
Marker (Side)		DEK5				/			
Warning cover		/				/			
DIN rail mounting adapter		WHH-WS1.5-DB				/			
DIN rail		NS35/7.5 & NS35/15 (Steel and Aluminium alloy are optional)				/			
End stopper		/				/			

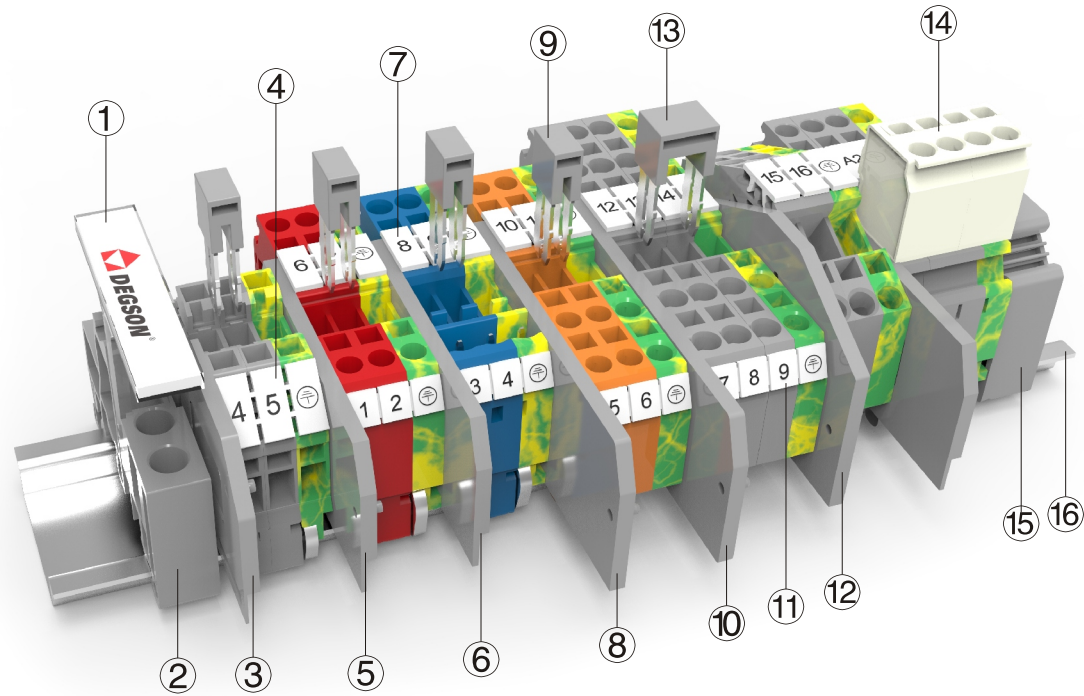
Spring-cage connection technology

Feed-through, multi-conductor and ground terminal blocks

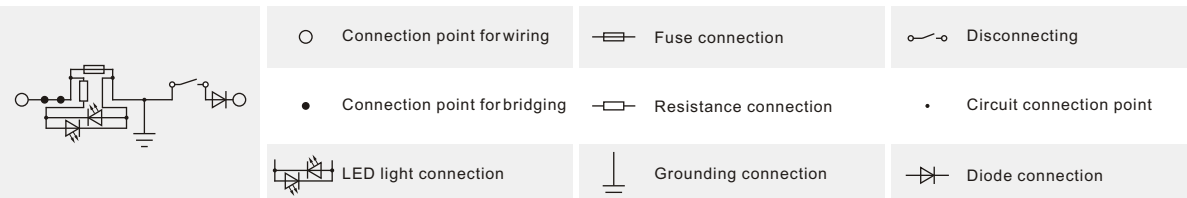

WS 1.5T-DB
WS 1.5T-DB-11A(H)

Notes: For additional accessories and operating instruction, see page 36.

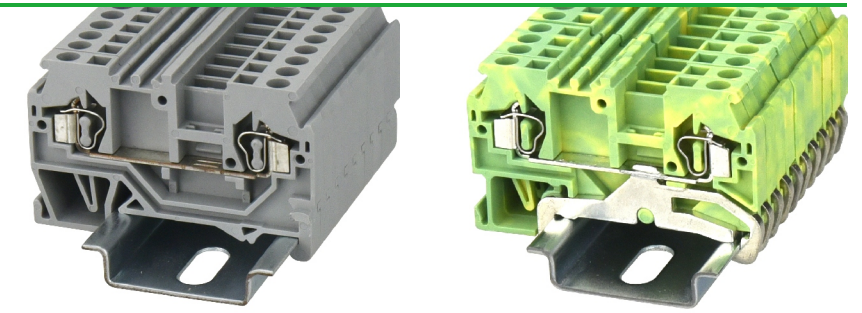
Dimension									
Width/Length/Height	mm	8/25/17				8/21.5/17			
Electrical Parameter		IEC IEC60947-7-1		UL UL1059		IEC IEC60947-7-1		UL UL1059	
Rated voltage	V	800		300		800		300	
Rated current	A	17.5		10		17.5		10	
Wire range	mm ² /AWG	0.2-1.5		28-16		0.2-1.5		28-16	
Rated surge voltage/Degree of pollution	KV/-	8/3				8/3			
Overvoltage category/Insulation material group	-/-	III / I				III / I			
Connection capacity		Solid	Stranded	Ferrule (with and without plastic sleeve)		Solid	Stranded	Ferrule (with and without plastic sleeve)	
1 conductor	mm ²	0.2-1.5	0.2-1.5	0.2-1.5	0.2-1	0.2-1.5	0.2-1.5	0.2-1.5	0.2-1
2 conductors with same cross section, stranded, TWIN ferrules with plastic sleeve	mm ²	—	—	—	0.5	—	—	—	0.5
General information									
Insulation material/Flammability rating(according to UL 94)		PA/V0				PA/V0			
Operation temperature	°C (°F)	-40(-40)~105(221)				-40(-40)~105(221)			
Stripping length	mm	8-9				8-9			
Color		Gray (customization demand is available)				Gray (customization demand is available)			
Slotted screwdriver size (Blade thickness x Width)	mm	0.4x2.5				0.4x2.5			
Accessories									
Adjacent jumper (2P)		/				/			
End cover		D-WS1.5-DB				D-WS1.5-DB			
Marker (Side)		DEK5				/			
Warning cover		/				/			
DIN rail mounting adapter		WHH-WS1.5-DB				/			
DIN rail		NS35/7.5 & NS35/15 (Steel and Aluminium alloy are optional)				/			
End stopper		/				/			



Description	Part No.	Remark
① Terminalstrip marker carrier	DLM2-01P-17-00A(H)	Suitable for E-PC, use for marking
② End stopper	E-PC-01P-11-1000A(H)	Fixing products on NS35 DIN rail
③ End cover	D-WS2.5-SD-01P-11-00A(H)	End cover is used for WS2.5-SD&WS2.5-SD-PE
④ Marker	ZB5-10P-19-00A(H)	Marker is used for the side of WS2.5-SD series
⑤ End cover	D-WS2.5-01P-11-00A(H)	End cover is used for WS2.5&WS2.5-PE
⑥ End cover	D-WS2.5P-01P-11-00A(H)	End cover is used for WS2.5P&WS2.5P-PE
⑦ Marker	ZB5-10P-19-00A(H)	Marker is used for the top of WS2.5 series
⑧ End cover	D-WS2.5-TW-01P-11-00A(H)	End cover is used for WS2.5-TW&WS2.5-TW-PE
⑨ Adjacent jumper	WFA2.5-02P-11-00A(H)	02P bridge, use for WS2.5 series
⑩ End cover	D-WS2.5-QU-01P-11-00A(H)	End cover is used for WS2.5-QU&WS2.5-QU-PE
⑪ Marker	DEK5-50P-19-00A(H)	Marker is used for the side of WS2.5 series
⑫ End cover	D-WS2.5-TW-TA-01P-11-00A(H)	End cover is used for WS2.5-TW-TA&WS2.5-TW-TA-PE
⑬ Alternate jumper	WFB2.5-02P-11-00A(H)	02P bridge, use for WS2.5 series
⑭ Plug	8EDGK-5.0-04P-11-01A(H)	Mating with WS2.5P&WS2.5P-PE
⑮ End stopper	E-WS-01P-11-00A(H)	Fixing products on NS35 DIN rail
⑯ DIN rail	NS35/7.5-0150-00A(H)	NS35 DIN rail

Circuit diagram

Spring-cage connection technology

Feed-through, multi-conductor and ground terminal blocks


WS 2.5

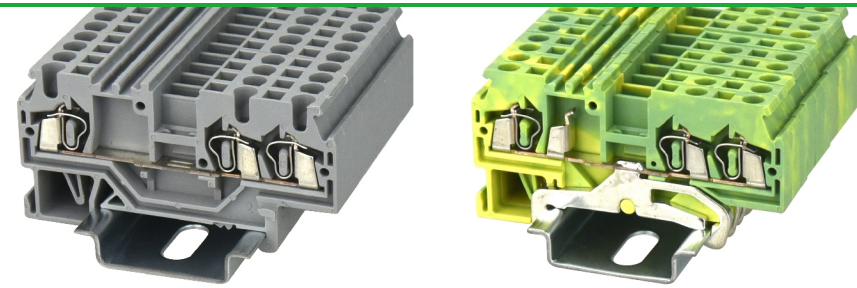
WS 2.5-PE

Notes: For additional accessories and operating instruction, see page 39.

Dimension								
Width/Length/Height(NS35/7.5&NS35/15) mm	5/53/35.45(42.95)				5/53/35.45(42.95)			
Electrical Parameter	IEC IEC60947-7-1		UL UL1059		IEC IEC60947-7-2		UL UL1059	
Rated voltage V	800		600		/		/	
Rated current A	24		15		/		/	
Wire range mm ² /AWG	0.2-2.5		28-14		0.2-2.5		28-14	
Rated surge voltage/Degree of pollution KV/-	8/3				8/3			
Overvoltage category/Insulation material group -/-	III / I				III / I			
Connection capacity	Solid	Stranded	Ferrule (with and without plastic sleeve)		Solid	Stranded	Ferrule (with and without plastic sleeve)	
1 conductor mm ²	0.2-2.5	0.2-2.5	0.2-2.5	0.2-1.5	0.2-2.5	0.2-2.5	0.2-2.5	0.2-1.5
2 conductors with same cross section, stranded, TWIN ferrules with plastic sleeve mm ²	-	-	-	0.5	-	-	-	0.5
General information								
Insulation material/Flammability rating(according to UL 94)	PA/V0				PA/V0			
Operation temperature °C (°F)	-40(-40)~105(221)				-40(-40)~105(221)			
Stripping length mm	8-9				8-9			
Color	Gray (customization demand is available)				Green-yellow			
Slotted screwdriver size (Blade thickness x Width) mm	0.5x3.5				0.5x3.5			
Accessories								
Adjacent jumper (2P)	WFA2.5				/			
Alternate jumper (2P)	WFB2.5				/			
Staggered jumper (2P)	WFC2.5-2 WFC2.5-6	WFC2.5-3 WFC2.5-7	WFC2.5-4 WFC2.5-8	WFC2.5-5	/			
End cover	D-WS2.5				D-WS2.5			
Marker (Top)	ZB5&WB5				ZB5&WB5			
Marker (Side)	DEK5				DEK5			
Warning cover	EEA2.5				EEA2.5			
DIN rail	NS35/7.5 & NS35/15 (Steel and Aluminium alloy are optional)				NS35/7.5 & NS35/15 (Steel and Aluminium alloy are optional)			
End stopper	E-WS&E-PC&E-MK				E-WS&E-PC&E-MK			

Spring-cage connection technology

Feed-through, multi-conductor and ground terminal blocks


WS 2.5-TW

WS 2.5-TW-PE

Notes: For additional accessories and operating instruction, see page 39.

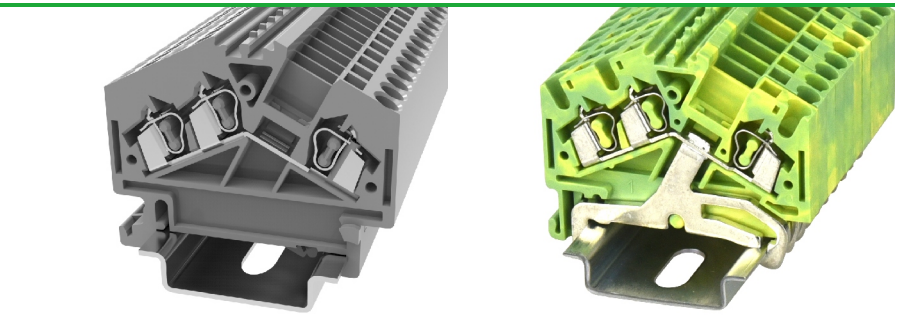
UL US CE ENE RoHS REACH

UL US CE ENE RoHS REACH

Dimension		UL US CE ENE RoHS REACH				UL US CE ENE RoHS REACH			
Width/Length/Height(NS35/7.5&NS35/15) mm		5/64.2/35.45(42.95)				5/64.2/35.45(42.95)			
Electrical Parameter		IEC IEC60947-7-1		UL UL1059		IEC IEC60947-7-2		UL UL1059	
Rated voltage	V	800		600		/		/	
Rated current	A	24		15		/		/	
Wire range	mm ² /AWG	0.2-2.5		28-14		0.2-2.5		28-14	
Rated surge voltage/Degree of pollution	KV/-	8/3				8/3			
Overvoltage category/Insulation material group	-/-	III / I				III / I			
Connection capacity		Solid	Stranded	Ferrule (with and without plastic sleeve)		Solid	Stranded	Ferrule (with and without plastic sleeve)	
1 conductor	mm ²	0.2-2.5	0.2-2.5	0.2-2.5	0.2-1.5	0.2-2.5	0.2-2.5	0.2-2.5	0.2-1.5
2 conductors with same cross section, stranded, TWIN ferrules with plastic sleeve	mm ²	—	—	—	0.5	—	—	—	0.5
General information									
Insulation material/Flammability rating(according to UL 94)		PA/V0				PA/V0			
Operation temperature °C (°F)		-40(-40)~105(221)				-40(-40)~105(221)			
Stripping length mm		11-12				11-12			
Color		Gray (customization demand is available)				Green-yellow			
Slotted screwdriver size (Blade thickness x Width) mm		0.5x3.5				0.5x3.5			
Accessories									
Adjacent jumper (2P)		WFA2.5				/			
Alternate jumper (2P)		WFB2.5				/			
Staggered jumper (2P)		WFC2.5-2 WFC2.5-6	WFC2.5-3 WFC2.5-7	WFC2.5-4 WFC2.5-8	WFC2.5-5	/			
End cover		D-WS2.5-TW				D-WS2.5-TW			
Marker (Top)		ZB5&WB5				ZB5&WB5			
Marker (Side)		DEK5				DEK5			
Warning cover		EEA2.5				EEA2.5			
DIN rail		NS35/7.5 & NS35/15 (Steel and Aluminium alloy are optional)				NS35/7.5 & NS35/15 (Steel and Aluminium alloy are optional)			
End stopper		E-WS&E-PC&E-MK				E-WS&E-PC&E-MK			

Spring-cage connection technology

Feed-through, multi-conductor and ground terminal blocks


WS 2.5-TW-TA

WS 2.5-TW-TA-PE

Notes: For additional accessories and operating instruction, see page 39.

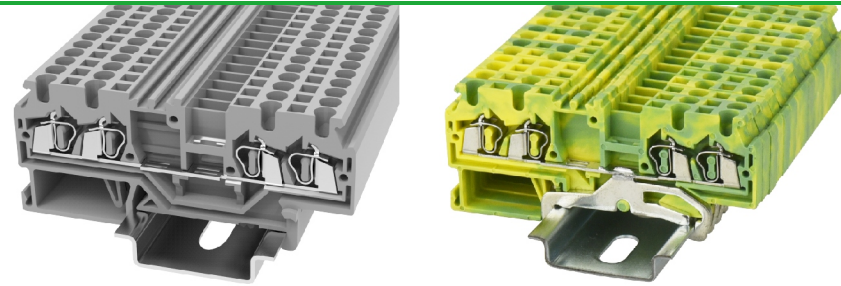
CE ENE RoHS REACH

CE ENE RoHS REACH

Dimension		CE ENE RoHS REACH				CE ENE RoHS REACH			
Width/Length/Height(NS35/7.5&NS35/15) mm		5/50.5/43.65(51.15)				5/50.5/43.65(51.15)			
Electrical Parameter		IEC IEC60947-7-1		UL UL1059		IEC IEC60947-7-2		UL UL1059	
Rated voltage	V	800		600		/		/	
Rated current	A	24		15		/		/	
Wire range	mm ² /AWG	0.2-2.5		28-14		0.2-2.5		28-14	
Rated surge voltage/Degree of pollution	KV/-	8/3				8/3			
Overvoltage category/Insulation material group	-/-	III / I				III / I			
Connection capacity		Solid	Stranded	Ferrule (with and without plastic sleeve)		Solid	Stranded	Ferrule (with and without plastic sleeve)	
1 conductor	mm ²	0.2-2.5	0.2-2.5	0.2-2.5	0.2-1.5	0.2-2.5	0.2-2.5	0.2-2.5	0.2-1.5
2 conductors with same cross section, stranded, TWIN ferrules with plastic sleeve	mm ²	—	—	—	0.5	—	—	—	0.5
General information									
Insulation material/Flammability rating(according to UL 94)		PA/V0				PA/V0			
Operation temperature °C (°F)		-40(-40)~105(221)				-40(-40)~105(221)			
Stripping length mm		11-12				11-12			
Color		Gray (customization demand is available)				Green-yellow			
Slotted screwdriver size (Blade thickness x Width) mm		0.5x3.5				0.5x3.5			
Accessories									
Adjacent jumper (2P)		WFA2.5				/			
Alternate jumper (2P)		WFB2.5				/			
Staggered jumper (2P)		WFC2.5-2 WFC2.5-6	WFC2.5-3 WFC2.5-7	WFC2.5-4 WFC2.5-8	WFC2.5-5	/			
End cover		D-WS2.5-TW-TA				D-WS2.5-TW-TA			
Marker (Top)		ZB5&WB5				ZB5&WB5			
Marker (Side)		/				/			
Warning cover		EEA2.5				EEA2.5			
DIN rail		NS35/7.5 & NS35/15 (Steel and Aluminium alloy are optional)				NS35/7.5 & NS35/15 (Steel and Aluminium alloy are optional)			
End stopper		E-WS&E-PC&E-MK				E-WS&E-PC&E-MK			

Spring-cage connection technology

Feed-through, multi-conductor and ground terminal blocks


WS 2.5-QU

WS 2.5-QU-PE

Notes: For additional accessories and operating instruction, see page 39.

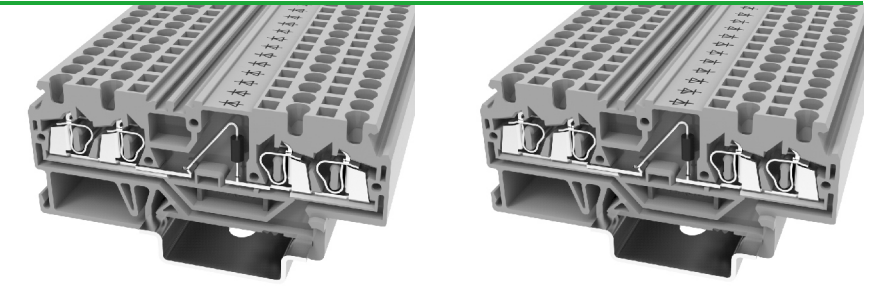
CE ENEC RoHS REACH

CE ENEC RoHS REACH

Dimension		5/75.5/35.45(42.95)			
Width/Length/Height(NS35/7.5&NS35/15) mm		5/75.5/35.45(42.95)			
Electrical Parameter		IEC IEC60947-7-1		UL UL1059	
Rated voltage	V	800		600	
Rated current	A	24		15	
Wire range	mm ² /AWG	0.2-2.5		28-14	
Rated surge voltage/Degree of pollution	KV/-	8/3			
Overvoltage category/Insulation material group	-/-	III / I			
Connection capacity		Solid	Stranded	Ferrule (with and without plastic sleeve)	
1 conductor	mm ²	0.2-2.5	0.2-2.5	0.2-2.5	0.2-1.5
2 conductors with same cross section, stranded, TWIN ferrules with plastic sleeve	mm ²	—	—	—	0.5
General information		PA/V0			
Insulation material/Flammability rating(according to UL 94)		PA/V0			
Operation temperature	°C (°F)	-40(-40)~105(221)			
Stripping length	mm	11-12			
Color		Gray (customization demand is available)			
Slotted screwdriver size (Blade thickness x Width) mm		0.5x3.5			
Accessories					
Adjacent jumper (2P)		WFA2.5		/	
Alternate jumper (2P)		WFB2.5		/	
Staggered jumper (2P)		WFC2.5-2 WFC2.5-6	WFC2.5-3 WFC2.5-7	WFC2.5-4 WFC2.5-8	WFC2.5-5
End cover		D-WS2.5-QU		D-WS2.5-QU	
Marker (Top)		ZB5&WB5		ZB5&WB5	
Marker (Side)		DEK5		DEK5	
Warning cover		EEA2.5		EEA2.5	
DIN rail		NS35/7.5 & NS35/15 (Steel and Aluminium alloy are optional)		NS35/7.5 & NS35/15 (Steel and Aluminium alloy are optional)	
End stopper		E-WS&E-PC&E-MK		E-WS&E-PC&E-MK	

Spring-cage connection technology

Component terminal blocks


WS2.5-QU-LD-100A

WS2.5-QU-LD-101A

Notes: For additional accessories and operating instruction, see page 39.

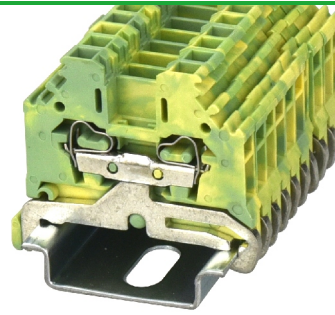
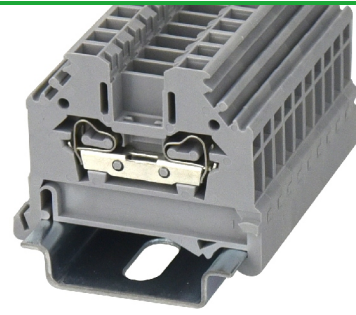
CE ENEC RoHS REACH

CE ENEC RoHS REACH

Dimension		5/75.5/35.45(42.95)			
Width/Length/Height(NS35/7.5&NS35/15) mm		5/75.5/35.45(42.95)			
Electrical Parameter		IEC IEC60947-7-1		UL UL1059	
Rated voltage&Reverse voltage	V	250/1000		/	
Rated current	A	0.5		/	
Wire range	mm ² /AWG	0.2-2.5		28-14	
Rated surge voltage/Degree of pollution	KV/-	8/3			
Overvoltage category/Insulation material group	-/-	III / I			
Connection capacity		Solid	Stranded	Ferrule (with and without plastic sleeve)	
1 conductor	mm ²	0.2-2.5	0.2-2.5	0.2-2.5	0.2-1.5
2 conductors with same cross section, stranded, TWIN ferrules with plastic sleeve	mm ²	—	—	—	0.5
General information		PA/V0			
Insulation material/Flammability rating(according to UL 94)		PA/V0			
Operation temperature	°C (°F)	-40(-40)~105(221)			
Stripping length	mm	11-12			
Color		Gray (customization demand is available)			
Slotted screwdriver size (Blade thickness x Width) mm		0.5x3.5			
Accessories					
Adjacent jumper (2P)		/		/	
Alternate jumper (2P)		/		/	
Staggered jumper (2P)		/		/	
End cover		D-WS2.5-QU		D-WS2.5-QU	
Marker (Top)		ZB5&WB5		ZB5&WB5	
Marker (Side)		DEK5		DEK5	
Warning cover		EEA2.5		EEA2.5	
DIN rail		NS35/7.5 & NS35/15 (Steel and Aluminium alloy are optional)		NS35/7.5 & NS35/15 (Steel and Aluminium alloy are optional)	
End stopper		E-WS&E-PC&E-MK		E-WS&E-PC&E-MK	

Spring-cage connection technology

Feed-through, multi-conductor and ground terminal blocks


WS 2.5-SD

WS 2.5-SD-PE

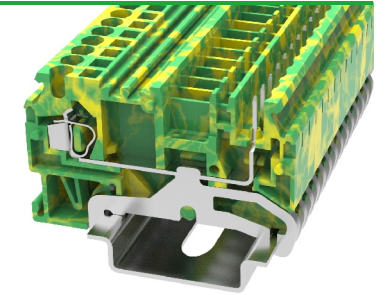
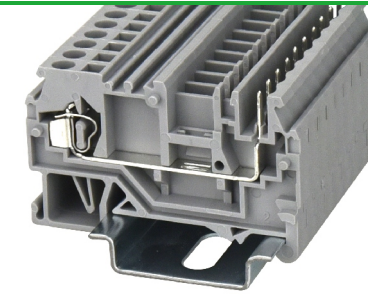
Notes: For additional accessories and operating instruction, see page 39.

CE ENEC RoHS REACH
CE ENEC RoHS REACH

Dimension		CE ENEC RoHS REACH				CE ENEC RoHS REACH			
Width/Length/Height(NS35/7.5&NS35/15) mm		5/42.5/38(45.5)				5/42.5/38(45.5)			
Electrical Parameter		IEC IEC60947-7-1		UL UL1059		IEC IEC60947-7-2		UL UL1059	
Rated voltage	V	800		600		/		/	
Rated current	A	24		15		/		/	
Wire range	mm ² /AWG	0.2-2.5		28-12		0.2-2.5		28-12	
Rated surge voltage/Degree of pollution	KV/-	8/3				8/3			
Overvoltage category/Insulation material group	-/-	III / I				III / I			
Connection capacity		Solid	Stranded	Ferrule (with and without plastic sleeve)		Solid	Stranded	Ferrule (with and without plastic sleeve)	
1 conductor	mm ²	0.2-2.5	0.2-2.5	0.2-2.5	0.2-1	0.2-2.5	0.2-2.5	0.2-2.5	0.2-1
2 conductors with same cross section, stranded, TWIN ferrules with plastic sleeve	mm ²	—	—	—	0.5	—	—	—	0.5
General information									
Insulation material/Flammability rating(according to UL 94)		PA/V0				PA/V0			
Operation temperature °C (°F)		-40(-40)~105(221)				-40(-40)~105(221)			
Stripping length mm		8-9				8-9			
Color		Gray (customization demand is available)				Green-yellow			
Slotted screwdriver size (Blade thickness x Width) mm		0.5x3.5				0.5x3.5			
Accessories									
Adjacent jumper (2P)		WFA2.5				/			
Alternate jumper (2P)		WFB2.5				/			
Staggered jumper (2P)		WFC2.5-2 WFC2.5-6	WFC2.5-3 WFC2.5-7	WFC2.5-4 WFC2.5-8	WFC2.5-5	/			
End cover		D-WS2.5-SD				D-WS2.5-SD			
Marker (Top)		/				/			
Marker (Side)		ZB5&WB5				ZB5&WB5			
Warning cover		EEA2.5				EEA2.5			
DIN rail		NS35/7.5 & NS35/15 (Steel and Aluminium alloy are optional)				NS35/7.5 & NS35/15 (Steel and Aluminium alloy are optional)			
End stopper		E-WS&E-PC&E-MK				E-WS&E-PC&E-MK			

Spring-cage connection technology

Plug-in connection and its ground terminal blocks

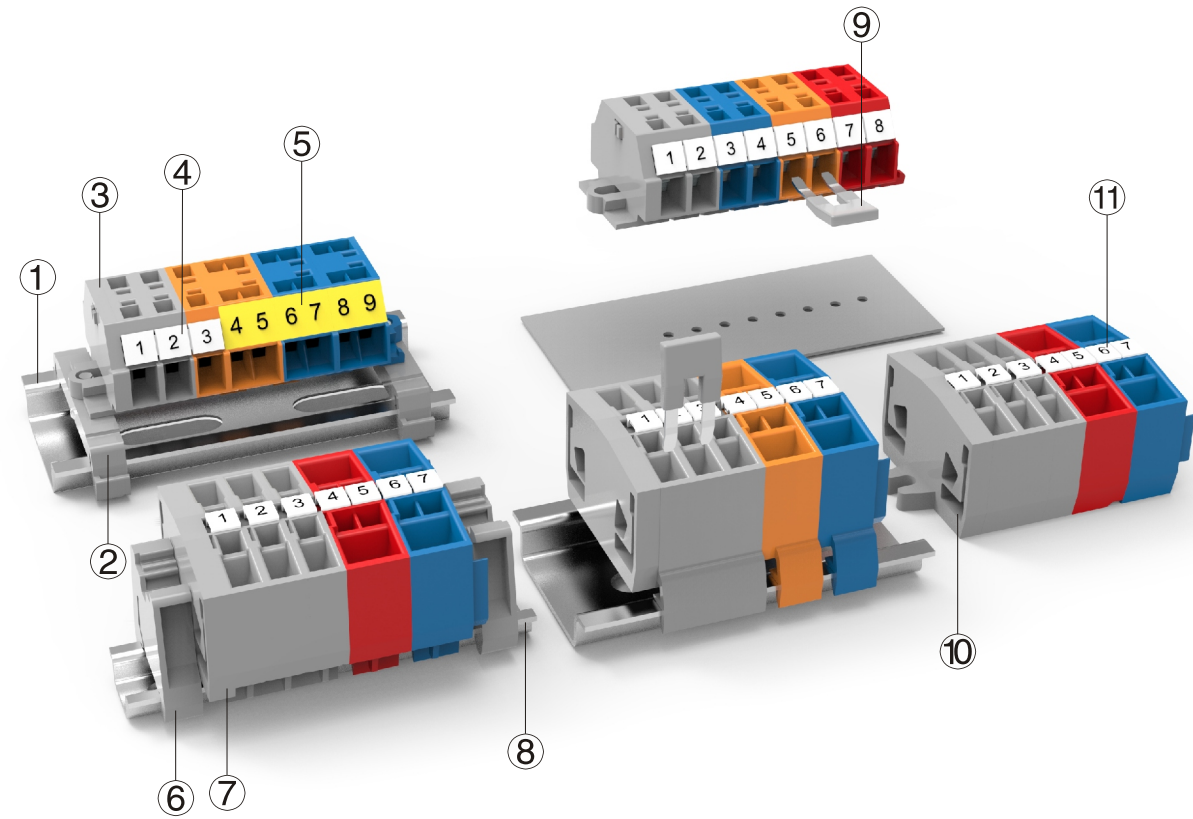

WS 2.5P

WS 2.5P-PE

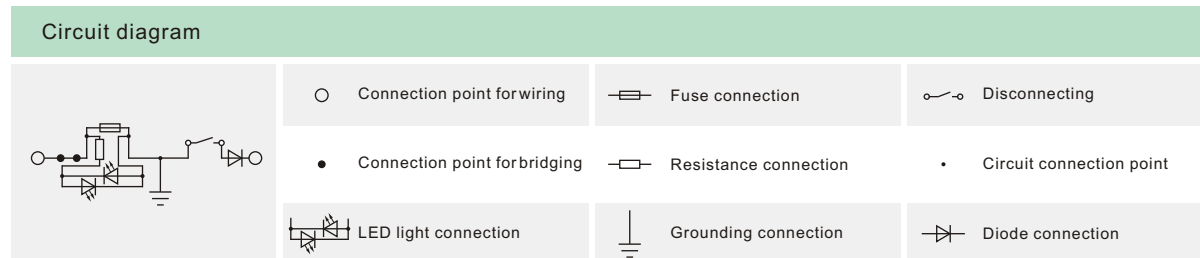
Notes: For additional accessories and operating instruction, see page 39.

CE ENEC RoHS REACH
CE ENEC RoHS REACH

Dimension		CE ENEC RoHS REACH				CE ENEC RoHS REACH			
Width/Length/Height(NS35/7.5&NS35/15) mm		5/53/35.45(42.95)				5/53/35.45(42.95)			
Electrical Parameter		IEC IEC60947-7-1		UL UL1059		IEC IEC60947-7-2		UL UL1059	
Rated voltage	V	500		300		/		/	
Rated current	A	22		15		/		/	
Wire range	mm ² /AWG	0.2-2.5		28-14		0.2-2.5		28-14	
Rated surge voltage/Degree of pollution	KV/-	4/3				4/3			
Overvoltage category/Insulation material group	-/-	III / I				III / I			
Connection capacity		Solid	Stranded	Ferrule (with and without plastic sleeve)		Solid	Stranded	Ferrule (with and without plastic sleeve)	
1 conductor	mm ²	0.2-2.5	0.2-2.5	0.2-1.5	0.2-1.5	0.2-2.5	0.2-2.5	0.2-1.5	0.2-1.5
2 conductors with same cross section, stranded, TWIN ferrules with plastic sleeve	mm ²	—	—	—	0.5	—	—	—	0.5
General information									
Insulation material/Flammability rating(according to UL 94)		PA/V0				PA/V0			
Operation temperature °C (°F)		-40(-40)~105(221)				-40(-40)~105(221)			
Stripping length mm		9-10				9-10			
Color		Gray (customization demand is available)				Green-yellow			
Slotted screwdriver size (Blade thickness x Width) mm		0.5x3.5				0.5x3.5			
Accessories									
Adjacent jumper (2P)		WFA2.5				/			
Alternate jumper (2P)		WFB2.5				/			
Staggered jumper (2P)		WFC2.5-2 WFC2.5-6	WFC2.5-3 WFC2.5-7	WFC2.5-4 WFC2.5-8	WFC2.5-5	/			
End cover		D-WS2.5P				D-WS2.5P			
Marker (Top)		ZB4&WB5				ZB4&WB5			
Marker (Side)		DEK5				DEK5			
Warning cover		EEA2.5				EEA2.5			
DIN rail		NS35/7.5 & NS35/15 (Steel and Aluminium alloy are optional)				NS35/7.5 & NS35/15 (Steel and Aluminium alloy are optional)			
End stopper		E-WS&E-PC&E-MK				E-WS&E-PC&E-MK			

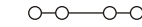
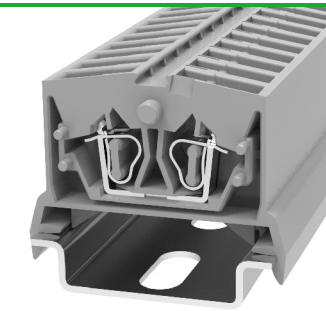


Description	Part No.	Remark
① DIN rail	NS35/7.5-0070-00A(H)	NS35 DIN rail
② Mounting foot with screw	WHH-WS1.5-DB-01P-11-00A(H)	For DIN35, can be screwed on terminal blocks with mounting flange
③ End cover	D-WS2.5-DB-01P-11-00A(H)	End cover is used for WS2.5-DB&WS2.5T-DB
④ Marker	DEK5-50P-19-00A(H)	Marker is used for the side of WS2.5-DB&WS2.5T-DB
⑤ Paper label	/	Paper label is used for the side of WS2.5-DB-11A&WS2.5T-DB-11A
⑥ End stopper	E-WS-DIN15-01P-11-00A(H)	Fixing products on NS15 DIN rail
⑦ End cover	D-WS2.5-MID-01P-11-00A(H)	End cover is used for WS2.5-DIN35&WS2.5T-DIN35
⑧ DIN rail	NS15-0070-00A(H)	NS15 DIN rail
⑨ Bridge	WFE-2.5-01P-11-00A(H)	Use for WS2.5-DB and WS2.5-DIN35&15 series
⑩ End cover	D-WS2.5-END-01P-11-00A(H)	End cover is used for WS2.5-END-CO&WS2.5T-END-CO
⑪ Marker	ZW5-40P-19-00A(H)	Marker is used for the top of WS2.5-MID-CO&WS2.5T-MID-CO



Spring-cage connection technology

Feed-through, multi-conductor and ground terminal blocks

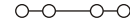
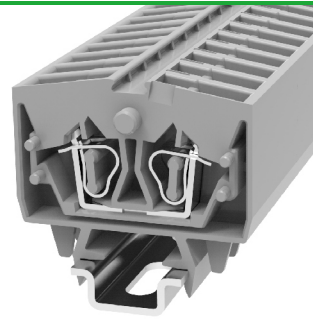

WS 2.5-DIN35
WS 2.5T-DIN35

Notes: For additional accessories and operating instruction, see page 47.

Dimension	WS 2.5-DIN35				WS 2.5T-DIN35					
	Width/Length/Height(NS35/7.5&NS35/15) mm		6/32/31.88(39.38)		Width/Length/Height(NS35/7.5&NS35/15) mm		10/32/31.88(39.38)			
Electrical Parameter	IEC IEC60947-7-1		UL UL1059		IEC IEC60947-7-1		UL UL1059			
	Rated voltage	V		800		V		600		
Rated current	A		24		A		20			
Wire range	mm ² /AWG		0.2-2.5		mm ² /AWG		28-12			
Rated surge voltage/Degree of pollution	KV/-		8/3		KV/-		8/3			
Overvoltage category/Insulation material group	-/-		III / I		-/-		III / I			
Connection capacity	Solid	Stranded	Ferrule (with and without plastic sleeve)		Solid	Stranded	Ferrule (with and without plastic sleeve)			
	1 conductor	mm ²	0.2-2.5	0.2-2.5	0.2-2.5	0.2-1	0.2-2.5	0.2-2.5	0.2-2.5	0.2-1
2 conductors with same cross section, stranded, TWIN ferrules with plastic sleeve	mm ²	—	—	—	0.5	—	—	—	0.5	
General information										
Insulation material/Flammability rating(according to UL 94)	PA/V0				PA/V0					
Operation temperature	°C (°F)				-40(-40)~105(221)					
Stripping length	mm				8-9					
Color	Gray (customization demand is available)				Gray (customization demand is available)					
Slotted screwdriver size (Blade thickness x Width) mm	0.5x3.5				0.5x3.5					
Accessories										
Adjacent jumper (2P)					WFE-2.5				/	
End cover					D-WS2.5-MID-CO				D-WS2.5-MID-CO	
Marker (Top)					ZW5				ZW5	
Marker (Side)	/				/				/	
Warning cover	/				/				/	
DIN rail					NS35/7.5 & NS35/15 (Steel and Aluminium alloy are optional)				NS35/7.5 & NS35/15 (Steel and Aluminium alloy are optional)	
End stopper					E-WS&E-PC&E-MK				E-WS&E-PC&E-MK	

Spring-cage connection technology

Feed-through, multi-conductor and ground terminal blocks

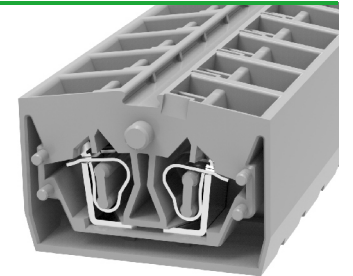
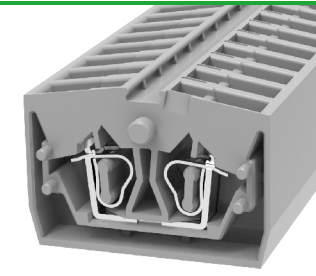

WS 2.5-DIN15
WS 2.5T-DIN15

Notes: For additional accessories and operating instruction, see page 47.

Dimension		IEC 60947-7-1				UL 1059			
Width/Length/Height(NS15)	mm	6/32/31.88				10/32/31.88			
Electrical Parameter		IEC 60947-7-1				UL 1059			
Rated voltage	V	800				600			
Rated current	A	24				20			
Wire range	mm ² /AWG	0.2-2.5				28-12			
Rated surge voltage/Degree of pollution	KV/-	8/3				8/3			
Overvoltage category/Insulation material group	-/-	III / I				III / I			
Connection capacity		Solid	Stranded	Ferrule (with and without plastic sleeve)		Solid	Stranded	Ferrule (with and without plastic sleeve)	
1 conductor	mm ²	0.2-2.5	0.2-2.5	0.2-2.5	0.2-1	0.2-2.5	0.2-2.5	0.2-2.5	0.2-1
2 conductors with same cross section, stranded, TWIN ferrules with plastic sleeve	mm ²	—	—	—	0.5	—	—	—	0.5
General information		PA/V0				PA/V0			
Insulation material/Flammability rating(according to UL 94)		PA/V0				PA/V0			
Operation temperature	°C (°F)	-40(-40)~105(221)				-40(-40)~105(221)			
Stripping length	mm	8-9				8-9			
Color		Gray (customization demand is available)				Gray (customization demand is available)			
Slotted screwdriver size (Blade thickness x Width)	mm	0.5x3.5				0.5x3.5			
Accessories		WFE-2.5				/			
Adjacent jumper (2P)		WFE-2.5				/			
End cover		D-WS2.5-MID-CO				D-WS2.5-MID-CO			
Marker (Top)		ZW5				ZW5			
Marker (Side)		/				/			
Warning cover		/				/			
DIN rail		NS15				NS15			
End stopper		E-WS-DIN15&E-PC-DIN15				E-WS-DIN15&E-PC-DIN15			

Spring-cage connection technology

Feed-through, multi-conductor and ground terminal blocks

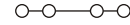
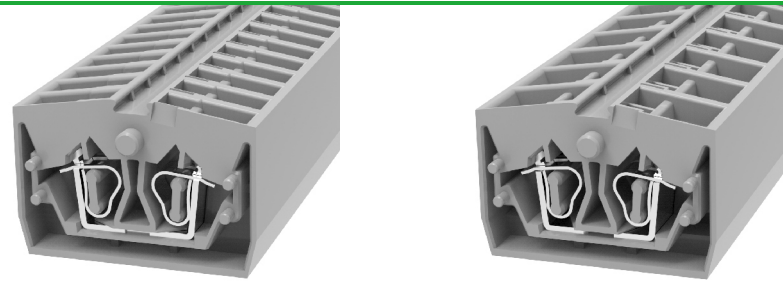

WS 2.5-MID-CO
WS 2.5T-MID-CO

Notes: For additional accessories and operating instruction, see page 47.

Dimension		IEC 60947-7-1				UL 1059			
Width/Length/Height	mm	6/32/22				10/32/22			
Electrical Parameter		IEC 60947-7-1				UL 1059			
Rated voltage	V	800				600			
Rated current	A	24				20			
Wire range	mm ² /AWG	0.2-2.5				28-12			
Rated surge voltage/Degree of pollution	KV/-	8/3				8/3			
Overvoltage category/Insulation material group	-/-	III / I				III / I			
Connection capacity		Solid	Stranded	Ferrule (with and without plastic sleeve)		Solid	Stranded	Ferrule (with and without plastic sleeve)	
1 conductor	mm ²	0.2-2.5	0.2-2.5	0.2-2.5	0.2-1	0.2-2.5	0.2-2.5	0.2-2.5	0.2-1
2 conductors with same cross section, stranded, TWIN ferrules with plastic sleeve	mm ²	—	—	—	0.5	—	—	—	0.5
General information		PA/V0				PA/V0			
Insulation material/Flammability rating(according to UL 94)		PA/V0				PA/V0			
Operation temperature	°C (°F)	-40(-40)~105(221)				-40(-40)~105(221)			
Stripping length	mm	8-9				8-9			
Color		Gray (customization demand is available)				Gray (customization demand is available)			
Slotted screwdriver size (Blade thickness x Width)	mm	0.5x3.5				0.5x3.5			
Accessories		WFE-2.5				/			
Adjacent jumper (2P)		WFE-2.5				/			
Alternate jumper (2P)		/				/			
Staggered jumper (2P)		/				/			
End cover		D-WS2.5-MID-CO				D-WS2.5-MID-CO			
Marker (Top)		ZW5				ZW5			
Marker (Side)		/				/			
Warning cover		/				/			
DIN rail		/				/			
End stopper		/				/			

Spring-cage connection technology

Feed-through, multi-conductor and ground terminal blocks

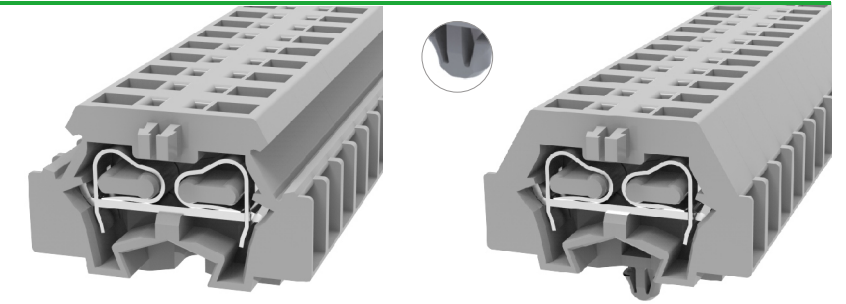

WS 2.5-END-CO
WS 2.5T-END-CO

Notes: For additional accessories and operating instruction, see page 47.

Dimension		IEC IEC60947-7-1				UL UL1059			
Width/Length/Height	mm	6/32/22				10/32/22			
Electrical Parameter		IEC IEC60947-7-1				UL UL1059			
Rated voltage	V	800				600			
Rated current	A	24				20			
Wire range	mm ² /AWG	0.2-2.5				28-12			
Rated surge voltage/Degree of pollution	KV/-	8/3				8/3			
Overvoltage category/Insulation material group	-/-	III / I				III / I			
Connection capacity		Solid	Stranded	Ferrule (with and without plastic sleeve)		Solid	Stranded	Ferrule (with and without plastic sleeve)	
1 conductor	mm ²	0.2-2.5	0.2-2.5	0.2-2.5	0.2-1	0.2-2.5	0.2-2.5	0.2-2.5	0.2-1
2 conductors with same cross section, stranded, TWIN ferrules with plastic sleeve	mm ²	—	—	—	0.5	—	—	—	0.5
General information		PA/V0				PA/V0			
Insulation material/Flammability rating(according to UL 94)		-40(-40)~105(221)				-40(-40)~105(221)			
Operation temperature	°C (°F)	8-9				8-9			
Stripping length	mm	Gray (customization demand is available)				Gray (customization demand is available)			
Color		0.5x3.5				0.5x3.5			
Slotted screwdriver size (Blade thickness x Width)	mm	Accessories		WFE-2.5		/		/	
Adjacent jumper (2P)		/		/		/		/	
Alternate jumper (2P)		D-WS2.5-END-CO		D-WS2.5-END-CO		/		/	
End cover		ZW5		ZW5		/		/	
Marker (Top)		/		/		/		/	
Marker (Side)		/		/		/		/	
Warning cover		/		/		/		/	
DIN rail		/		/		/		/	
End stopper		/		/		/		/	

Spring-cage connection technology

Feed-through, multi-conductor and ground terminal blocks

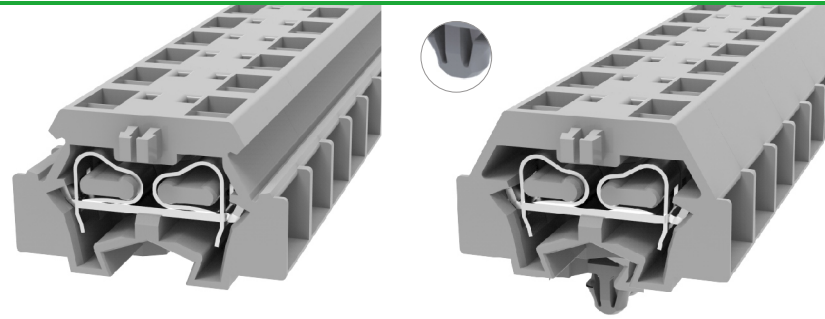

WS 2.5-DB
WS 2.5-DB-11A(H)

Notes: For additional accessories and operating instruction, see page 47.

Dimension		IEC IEC60947-7-1				UL UL1059			
Width/Length/Height	mm	6/28/18				6/28/18			
Electrical Parameter		IEC IEC60947-7-1				UL UL1059			
Rated voltage	V	800				300			
Rated current	A	24				15			
Wire range	mm ² /AWG	0.2-2.5				28-14			
Rated surge voltage/Degree of pollution	KV/-	8/3				8/3			
Overvoltage category/Insulation material group	-/-	III / I				III / I			
Connection capacity		Solid	Stranded	Ferrule (with and without plastic sleeve)		Solid	Stranded	Ferrule (with and without plastic sleeve)	
1 conductor	mm ²	0.2-2.5	0.2-2.5	0.2-2.5	0.2-1	0.2-2.5	0.2-2.5	0.2-2.5	0.2-1
2 conductors with same cross section, stranded, TWIN ferrules with plastic sleeve	mm ²	—	—	—	0.5	—	—	—	0.5
General information		PA/V0				PA/V0			
Insulation material/Flammability rating(according to UL 94)		-40(-40)~105(221)				-40(-40)~105(221)			
Operation temperature	°C (°F)	8-9				8-9			
Stripping length	mm	Gray (customization demand is available)				Gray (customization demand is available)			
Color		0.5x3.5				0.5x3.5			
Slotted screwdriver size (Blade thickness x Width)	mm	Accessories		WFE-2.5		/		/	
Adjacent jumper (2P)		/		/		/		/	
End cover		D-WS2.5-DB		D-WS2.5-DB		/		/	
Marker (Side)		DEK6		DEK6		/		/	
Warning cover		/		/		/		/	
DIN rail mounting adapter		WHH-WS1.5-DB		WHH-WS1.5-DB		/		/	
DIN rail		NS35/7.5 & NS35/15 (Steel and Aluminium alloy are optional)		NS35/7.5 & NS35/15 (Steel and Aluminium alloy are optional)		/		/	
End stopper		/		/		/		/	

Spring-cage connection technology

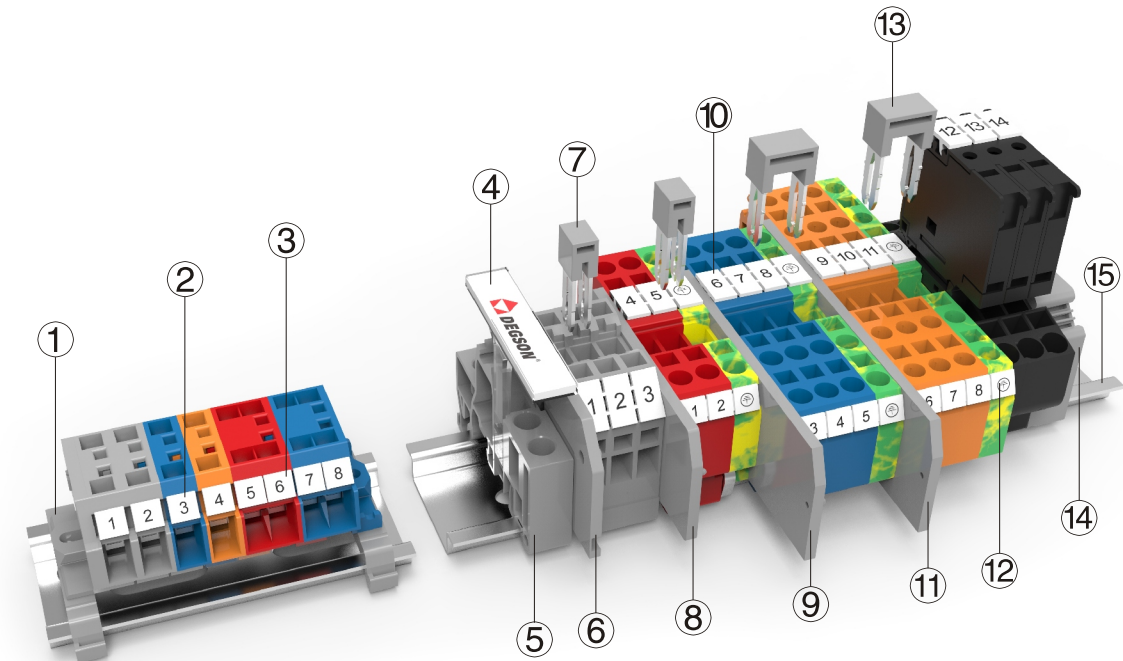
Feed-through, multi-conductor and ground terminal blocks



Notes: For additional accessories and operating instruction, see page 47.

WS 2.5T-DB
WS 2.5T-DB-11A(H)

Dimension									
Width/Length/Height	mm	10/28/18				10/28/18			
Electrical Parameter		IEC IEC60947-7-1		UL UL1059		IEC IEC60947-7-1		UL UL1059	
Rated voltage	V	800		300		800		300	
Rated current	A	24		15		24		15	
Wire range	mm ² /AWG	0.2-2.5		28-14		0.2-2.5		28-14	
Rated surge voltage/Degree of pollution	KV/-	8/3				8/3			
Overvoltage category/Insulation material group	-/-	III / I				III / I			
Connection capacity		Solid	Stranded	Ferrule (with and without plastic sleeve)		Solid	Stranded	Ferrule (with and without plastic sleeve)	
1 conductor	mm ²	0.2-2.5	0.2-2.5	0.2-2.5	0.2-1	0.2-2.5	0.2-2.5	0.2-2.5	0.2-1
2 conductors with same cross section, stranded, TWIN ferrules with plastic sleeve	mm ²	-	-	-	0.5	-	-	-	0.5
General information									
Insulation material/Flammability rating(according to UL 94)		PA/V0				PA/V0			
Operation temperature	°C (°F)	-40(-40)~105(221)				-40(-40)~105(221)			
Stripping length	mm	8-9				8-9			
Color		Gray (customization demand is available)				Gray (customization demand is available)			
Slotted screwdriver size (Blade thickness x Width)	mm	0.5x3.5				0.5x3.5			
Accessories									
Adjacent jumper (2P)		/				/			
End cover		D-WS2.5-DB				D-WS2.5-DB			
Marker (Side)		DEK6				DEK6			
Warning cover		/				/			
DIN rail mounting adapter		WHH-WS1.5-DB				/			
DIN rail		NS35/7.5 & NS35/15 (Steel and Aluminium alloy are optional)				/			
End stopper		/				/			



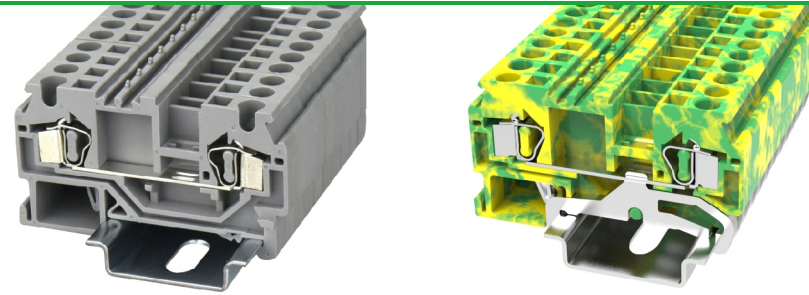
Description	Part No.	Remark
① Mounting foot with screw	WHH-WS1.5-DB-01P-11-00A(H)	For DIN35, can be screwed on terminal blocks with mounting flange
② Marker	DEK6-50P-19-00A(H)	Marker is used for the side of WS4 series
③ Marker	DEK5-50P-19-00A(H)	Marker is used for the side of WS4T-DB series
④ Terminal strip marker carrier	DLM2-01P-17-00A(H)	Suitable for E-PC, use for marking
⑤ End stopper	E-PC-01P-11-1000A(H)	Fixing products on NS35 DIN rail
⑥ End cover	D-WS4-SD-01P-11-00A(H)	End cover is used for WS4-SD
⑦ Adjacent jumper	WFA4-02P-11-00A(H)	02P bridge, use for WS4 series
⑧ End cover	D-WS4-01P-11-00A(H)	End cover is used for WS4&WS4-PE
⑨ End cover	D-WS4-TW-01P-11-00A(H)	End cover is used for WS4-TW&WS4-TW-PE
⑩ Marker	ZB6-10P-19-00A(H)	Marker is used for the top of WS4 series
⑪ End cover	D-WS4-QU-01P-11-00A(H)	End cover is used for WS4-QU&WS4-QU-PE
⑫ Marker	DEK6-50P-19-00A(H)	Marker is used for the side of WS4 series
⑬ Alternate jumper	WFB4-02P-11-00A(H)	02P bridge, use for WS4 series
⑭ End stopper	E-WS-01P-11-00A(H)	Fixing products on NS35 DIN rail
⑮ DIN rail	NS35/7.5-0150-00A(H)	NS35 DIN rail

Circuit diagram

	Connection point for wiring		Fuse connection		Disconnecting
	Connection point for bridging		Resistance connection		Circuit connection point
	LED light connection		Grounding connection		Diode connection

Spring-cage connection technology

Feed-through, multi-conductor and ground terminal blocks


WS 4

WS 4-PE

Notes: For additional accessories and operating instruction, see page 54.

UL US CE ENE RoHS REACH

UL US CE ENE RoHS REACH

Dimension		UL US CE ENE RoHS REACH				UL US CE ENE RoHS REACH			
Width/Length/Height(NS35/7.5&NS35/15) mm		6/60.4/36.45(43.95)				6/60.4/36.45(43.95)			
Electrical Parameter		IEC IEC60947-7-1		UL UL1059		IEC IEC60947-7-2		UL UL1059	
Rated voltage	V	800		600		/		/	
Rated current	A	32		20		/		/	
Wire range	mm ² /AWG	0.2-4		28-12		0.2-4		28-12	
Rated surge voltage/Degree of pollution	KV/-	8/3				8/3			
Overvoltage category/Insulation material group	-/-	III / I				III / I			
Connection capacity		Solid	Stranded	Ferrule (with and without plastic sleeve)		Solid	Stranded	Ferrule (with and without plastic sleeve)	
1 conductor	mm ²	0.2-4	0.2-4	0.2-2.5	0.2-2.5	0.2-4	0.2-4	0.2-2.5	0.2-2.5
2 conductors with same cross section, stranded, TWIN ferrules with plastic sleeve	mm ²	—	—	—	0.5-1	—	—	—	0.5-1
General information									
Insulation material/Flammability rating(according to UL 94)		PA/V0				PA/V0			
Operation temperature °C (°F)		-40(-40)~105(221)				-40(-40)~105(221)			
Stripping length mm		13-14				13-14			
Color		Gray (customization demand is available)				Green-yellow			
Slotted screwdriver size (Blade thickness x Width) mm		0.5x3.5				0.5x3.5			
Accessories									
Adjacent jumper (2P)		WFA4				/			
Alternate jumper (2P)		WFB4				/			
Staggered jumper (2P)		/				/			
End cover		D-WS4				D-WS4			
Marker (Top)		ZB6				ZB6			
Marker (Side)		DEK6				DEK6			
Warning cover		EEA4				EEA4			
DIN rail		NS35/7.5 & NS35/15 (Steel and Aluminium alloy are optional)				NS35/7.5 & NS35/15 (Steel and Aluminium alloy are optional)			
End stopper		E-WS&E-PC&E-MK				E-WS&E-PC&E-MK			

Spring-cage connection technology

Feed-through, multi-conductor and ground terminal blocks


WS 4-TW

WS 4-TW-PE

Notes: For additional accessories and operating instruction, see page 54.

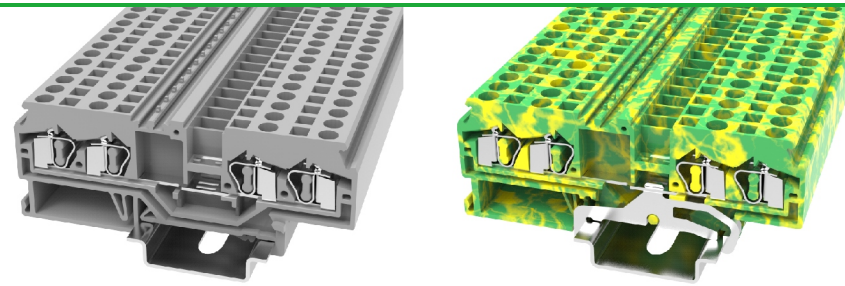
UL US CE ENE RoHS REACH

UL US CE ENE RoHS REACH

Dimension		UL US CE ENE RoHS REACH				UL US CE ENE RoHS REACH			
Width/Length/Height(NS35/7.5&NS35/15) mm		6/73.5/36.45(43.95)				6/73.5/36.45(43.95)			
Electrical Parameter		IEC IEC60947-7-1		UL UL1059		IEC IEC60947-7-2		UL UL1059	
Rated voltage	V	800		600		/		/	
Rated current	A	32		20		/		/	
Wire range	mm ² /AWG	0.2-4		28-12		0.2-4		28-12	
Rated surge voltage/Degree of pollution	KV/-	8/3				8/3			
Overvoltage category/Insulation material group	-/-	III / I				III / I			
Connection capacity		Solid	Stranded	Ferrule (with and without plastic sleeve)		Solid	Stranded	Ferrule (with and without plastic sleeve)	
1 conductor	mm ²	0.2-4	0.2-4	0.2-2.5	0.2-2.5	0.2-4	0.2-4	0.2-2.5	0.2-2.5
2 conductors with same cross section, stranded, TWIN ferrules with plastic sleeve	mm ²	—	—	—	0.5-1	—	—	—	0.5-1
General information									
Insulation material/Flammability rating(according to UL 94)		PA/V0				PA/V0			
Operation temperature °C (°F)		-40(-40)~105(221)				-40(-40)~105(221)			
Stripping length mm		10-12				10-12			
Color		Gray (customization demand is available)				Green-yellow			
Slotted screwdriver size (Blade thickness x Width) mm		0.5x3.5				0.5x3.5			
Accessories									
Adjacent jumper (2P)		WFA4				/			
Alternate jumper (2P)		WFB4				/			
Staggered jumper (2P)		/				/			
End cover		D-WS4-TW				D-WS4-TW			
Marker (Top)		ZB6				ZB6			
Marker (Side)		DEK6				DEK6			
Warning cover		EEA4				EEA4			
DIN rail		NS35/7.5 & NS35/15 (Steel and Aluminium alloy are optional)				NS35/7.5 & NS35/15 (Steel and Aluminium alloy are optional)			
End stopper		E-WS&E-PC&E-MK				E-WS&E-PC&E-MK			

Spring-cage connection technology

Feed-through, multi-conductor and ground terminal blocks


WS 4-QU

WS 4-QU-PE

Notes: For additional accessories and operating instruction, see page 54.

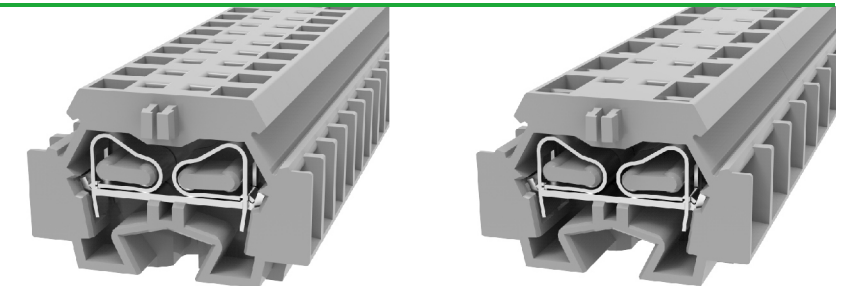
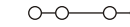
CE ENEC RoHS REACH

CE ENEC RoHS REACH

Dimension		CE ENEC RoHS REACH				CE ENEC RoHS REACH			
Width/Length/Height(NS35/7.5&NS35/15) mm		6/86.2/36.45(43.95)				6/86.2/36.45(43.95)			
Electrical Parameter		IEC IEC60947-7-1		UL UL1059		IEC IEC60947-7-2		UL UL1059	
Rated voltage	V	800		600		/		/	
Rated current	A	32		20		/		/	
Wire range	mm ² /AWG	0.2-4		28-12		0.2-4		28-12	
Rated surge voltage/Degree of pollution	KV/-	8/3				8/3			
Overvoltage category/Insulation material group	-/-	III / I				III / I			
Connection capacity		Solid	Stranded	Ferrule (with and without plastic sleeve)		Solid	Stranded	Ferrule (with and without plastic sleeve)	
1 conductor	mm ²	0.2-4	0.2-4	0.2-2.5	0.2-2.5	0.2-4	0.2-4	0.2-2.5	0.2-2.5
2 conductors with same cross section, stranded, TWIN ferrules with plastic sleeve	mm ²	—	—	—	0.5-1	—	—	—	0.5-1
General information									
Insulation material/Flammability rating(according to UL 94)		PA/V0				PA/V0			
Operation temperature °C (°F)		-40(-40)~105(221)				-40(-40)~105(221)			
Stripping length mm		11-12				11-12			
Color		Gray (customization demand is available)				Green-yellow			
Slotted screwdriver size (Blade thickness x Width) mm		0.5x3.5				0.5x3.5			
Accessories									
Adjacent jumper (2P)		WFA4				/			
Alternate jumper (2P)		WFB4				/			
Staggered jumper (2P)		/				/			
End cover		D-WS4-QU				D-WS4-QU			
Marker (Top)		ZB6				ZB6			
Marker (Side)		DEK6				DEK6			
Warning cover		EEA4				EEA4			
DIN rail		NS35/7.5 & NS35/15 (Steel and Aluminium alloy are optional)				NS35/7.5 & NS35/15 (Steel and Aluminium alloy are optional)			
End stopper		E-WS&E-PC&E-MK				E-WS&E-PC&E-MK			

Spring-cage connection technology

Feed-through, multi-conductor and ground terminal blocks


WS 4-DB

WS 4T-DB

Notes: For additional accessories and operating instruction, see page 54.

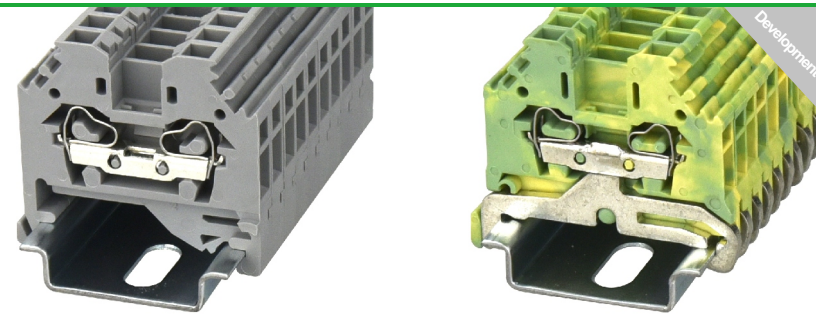
CE ENEC RoHS REACH

CE ENEC RoHS REACH

Dimension		CE ENEC RoHS REACH				CE ENEC RoHS REACH			
Width/Length/Height mm		7/33.4/23				12/33.4/23			
Electrical Parameter		IEC IEC60947-7-1		UL UL1059		IEC IEC60947-7-1		UL UL1059	
Rated voltage	V	630		300		800		300	
Rated current	A	32		20		32		20	
Wire range	mm ² /AWG	0.2-4		28-12		0.2-4		28-12	
Rated surge voltage/Degree of pollution	KV/-	8/3				8/3			
Overvoltage category/Insulation material group	-/-	III / I				III / I			
Connection capacity		Solid	Stranded	Ferrule (with and without plastic sleeve)		Solid	Stranded	Ferrule (with and without plastic sleeve)	
1 conductor	mm ²	0.2-4	0.2-4	0.2-2.5	0.2-2.5	0.2-4	0.2-4	0.2-2.5	0.2-2.5
2 conductors with same cross section, stranded, TWIN ferrules with plastic sleeve	mm ²	—	—	—	0.5-1	—	—	—	0.5-1
General information									
Insulation material/Flammability rating(according to UL 94)		PA/V0				PA/V0			
Operation temperature °C (°F)		-40(-40)~105(221)				-40(-40)~105(221)			
Stripping length mm		10-11				10-11			
Color		Gray (customization demand is available)				Gray (customization demand is available)			
Slotted screwdriver size (Blade thickness x Width) mm		0.5x3.5				0.5x3.5			
Accessories									
Adjacent jumper (2P)		/				/			
End cover		D-WS4-DB				D-WS4-DB			
Marker (Side)		DEK6				DEK6			
Warning cover		/				/			
DIN rail mounting adapter		WHH-WS1.5-DB				WHH-WS1.5-DB			
DIN rail		NS35/7.5 & NS35/15 (Steel and Aluminium alloy are optional)				NS35/7.5 & NS35/15 (Steel and Aluminium alloy are optional)			
End stopper		/				/			

Spring-cage connection technology

Feed-through, multi-conductor and ground terminal blocks


WS 4-SD

WS 4-SD-PE

Notes: For additional accessories and operating instruction, see page 54.

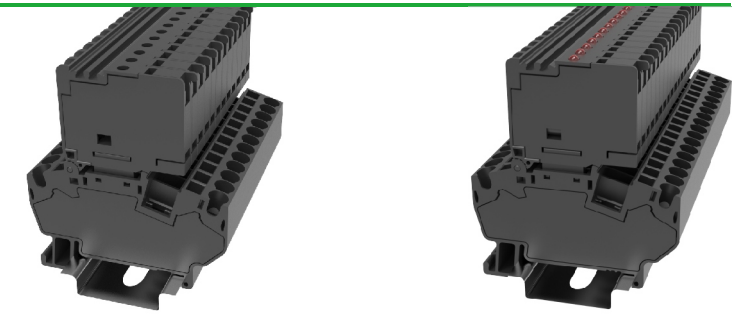
UL US CE ENE RoHS REACH

CE ENE RoHS REACH

Dimension		UL US CE ENE RoHS REACH				CE ENE RoHS REACH			
Width/Length/Height(NS35/7.5&NS35/15) mm		6/41.8/40(47.5)				6/41.8/40(47.5)			
Electrical Parameter		IEC IEC60947-7-1		UL UL1059		IEC IEC60947-7-2		UL UL1059	
Rated voltage	V	800		600		/		/	
Rated current	A	32		20		/		/	
Wire range	mm ² /AWG	0.2-4		28-12		0.2-4		28-12	
Rated surge voltage/Degree of pollution	KV/-	8/3				8/3			
Overvoltage category/Insulation material group	-/-	III / I				III / I			
Connection capacity		Solid	Stranded	Ferrule (with and without plastic sleeve)		Solid	Stranded	Ferrule (with and without plastic sleeve)	
1 conductor	mm ²	0.2-4	0.2-4	0.2-2.5	0.2-2.5	0.2-4	0.2-4	0.2-2.5	0.2-2.5
2 conductors with same cross section, stranded, TWIN ferrules with plastic sleeve	mm ²	—	—	—	0.5-1	—	—	—	0.5-1
General information									
Insulation material/Flammability rating(according to UL 94)		PA/V0				PA/V0			
Operation temperature °C (°F)		-40(-40)~105(221)				-40(-40)~105(221)			
Stripping length mm		11-12				11-12			
Color		Gray (customization demand is available)				Green-yellow			
Slotted screwdriver size (Blade thickness x Width) mm		0.5x3.5				0.5x3.5			
Accessories									
Adjacent jumper (2P)		WFA4				/			
Alternate jumper (2P)		WFB4				WFB4			
Staggered jumper (2P)		/				/			
End cover		D-WS4-SD				D-WS4-SD			
Marker (Top)		/				/			
Marker (Side)		ZB6				ZB6			
Warning cover		EEA4				EEA4			
DIN rail		NS35/7.5 & NS35/15 (Steel and Aluminium alloy are optional)				NS35/7.5 & NS35/15 (Steel and Aluminium alloy are optional)			
End stopper		E-WS&E-PC&E-MK				E-WS&E-PC&E-MK			

Spring-cage connection technology

Fuse terminal blocks(5X20)


WSF4-TA

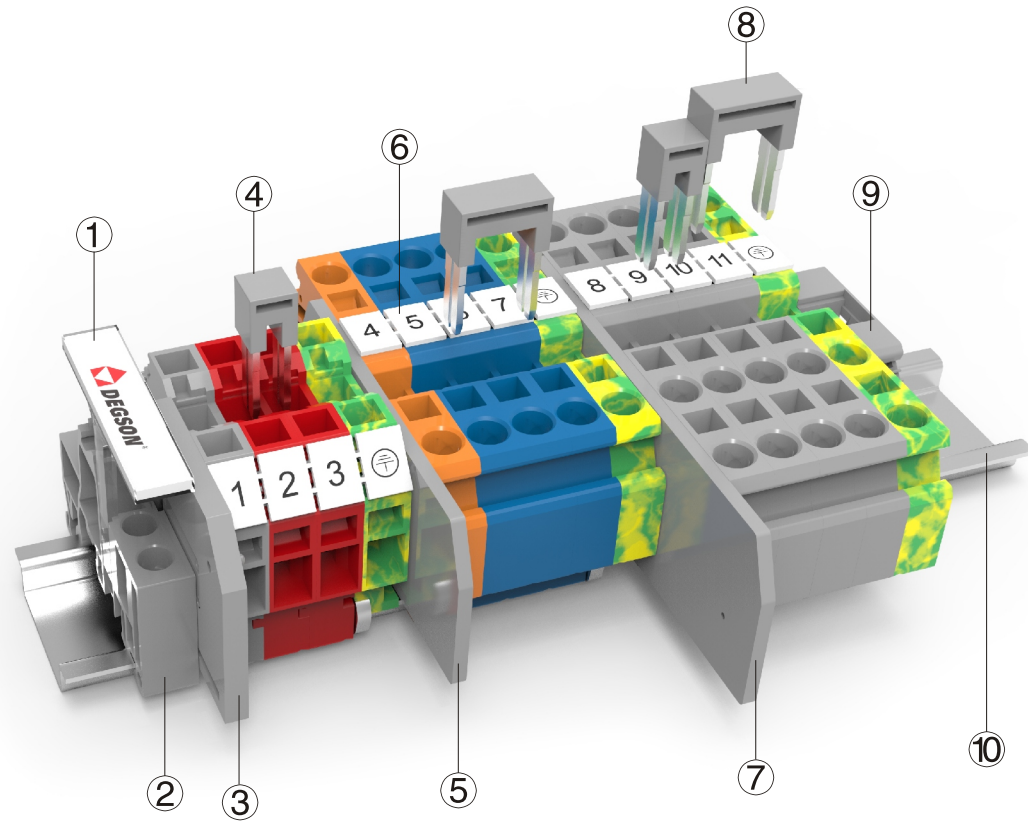
WSF4-TA-08A(H)

Notes: For additional accessories and operating instruction, see page 54.

UL US CE ENE RoHS REACH

CE ENE RoHS REACH

Dimension		UL US CE ENE RoHS REACH				CE ENE RoHS REACH			
Width/Length/Height(NS35/7.5&NS35/15) mm		6/60/68(75.5)				6/60/68(75.5)			
Electrical Parameter		IEC IEC60947-7-3		UL UL1059		IEC IEC60947-7-3		UL UL1059	
Rated voltage	V	800		600		30		30	
Rated current	A	16		10		16		10	
Wire range	mm ² /AWG	0.2-4		28-10		0.2-4		28-10	
Rated surge voltage/Degree of pollution	KV/-	8/3				8/3			
Overvoltage category/Insulation material group	-/-	III / I				III / I			
Connection capacity		Solid	Stranded	Ferrule (with and without plastic sleeve)		Solid	Stranded	Ferrule (with and without plastic sleeve)	
1 conductor	mm ²	0.2-4	0.2-4	0.2-2.5	0.2-2.5	0.2-4	0.2-4	0.2-2.5	0.2-2.5
2 conductors with same cross section, stranded, TWIN ferrules with plastic sleeve	mm ²	—	—	—	0.5-1	—	—	—	0.5-1
General information									
Insulation material/Flammability rating(according to UL 94)		PA/V0				PA/V0			
Operation temperature °C (°F)		-40(-40)~105(221)				-40(-40)~105(221)			
Stripping length mm		10-12				10-12			
Color		Black (customization demand is available)				Black (customization demand is available)			
Slotted screwdriver size (Blade thickness x Width) mm		0.5x3.5				0.5x3.5			
Accessories									
Adjacent jumper (2P)		WFA4				WFA4			
Alternate jumper (2P)		WFB4				WFB4			
Staggered jumper (2P)		/				/			
End cover		/				/			
Marker (Top)		ZB6				ZB6			
Marker (Side)		/				/			
Warning cover		EEA4				EEA4			
DIN rail		NS35/7.5 & NS35/15 (Steel and Aluminium alloy are optional)				NS35/7.5 & NS35/15 (Steel and Aluminium alloy are optional)			
End stopper		E-WS&E-PC&E-MK				E-WS&E-PC&E-MK			

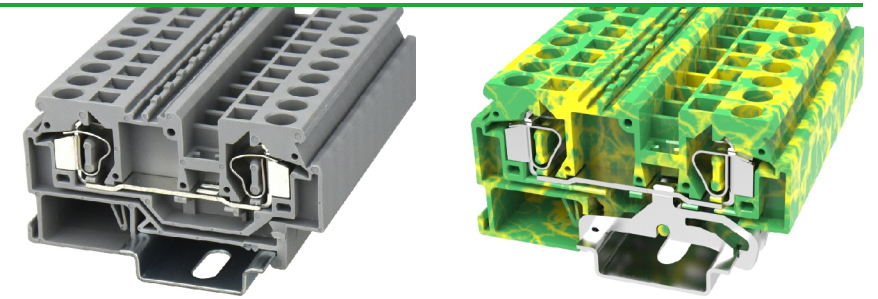


Description	Part No.	Remark
① Terminalstrip marker carrier	DLM2-01P-17-00A(H)	Suitable for E-PC, use for marking
② End stopper	E-PC-01P-11-1000A(H)	Fixing products on NS35 DIN rail
③ End cover	D-WS6-SD-01P-11-00A(H)	End cover is used for WS6-SD&WS6-SD-PE
④ Adjacent jumper	WFA6-02P-11-00A(H)	02P bridge, use for WS6 series
⑤ End cover	D-WS6-01P-11-00A(H)	End cover is used for WS6&WS6-PE
⑥ Marker	ZB8-10P-19-00A(H)	Marker is used for the top of WS6 series
⑦ End cover	D-WS6-TW-01P-11-00A(H)	End cover is used for WS6-TW&WS6-TW-PE
⑧ Alternate jumper	WFB6-02P-11-00A(H)	02P bridge, use for WS6 series
⑨ End stopper	E-WS-01P-11-00A(H)	Fixing products on NS35 DIN rail
⑩ DIN rail	NS35/7.5-0150-00A(H)	NS35 DIN rail

Circuit diagram			
	Connection point for wiring		Fuse connection
	Connection point for bridging		Resistance connection
	LED light connection		Grounding connection
	Disconnecting		Circuit connection point
	Diode connection		

Spring-cage connection technology

Feed-through, multi-conductor and ground terminal blocks



WS 6



WS 6-PE

Notes: For additional accessories and operating instruction, see page 61.

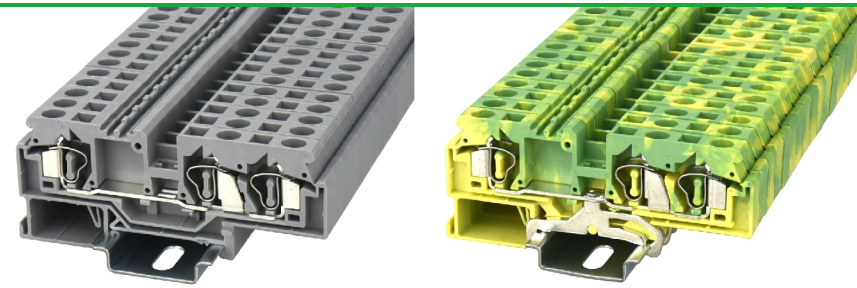
UL US CE ENE RoHS REACH

UL US CE ENE RoHS REACH

Dimension	WS 6				WS 6-PE			
	Width/Length/Height(NS35/7.5&NS35/15) mm		8/74.5/40(47.5)		Width/Length/Height(NS35/7.5&NS35/15) mm		8/74.5/40(47.5)	
Electrical Parameter	IEC IEC60947-7-1		UL UL1059		IEC IEC60947-7-2		UL UL1059	
	Rated voltage	V		800		600		/
Rated current	A		41		30		/	
Wire range	mm ² /AWG		0.2-6		24-10		0.2-6 24-10	
Rated surge voltage/Degree of pollution	KV/-		8/3		8/3		8/3	
Overvoltage category/Insulation material group	-/-		III / 1		III / 1		III / 1	
Connection capacity	Solid		Stranded		Ferrule (with and without plastic sleeve)		Solid	
	mm ²		mm ²		mm ²		mm ²	
1 conductor	0.2-6		0.2-6		0.2-6		0.2-4	
2 conductors with same cross section, stranded, TWIN ferrules with plastic sleeve	-		-		-		0.5-2.5	
General information								
Insulation material/Flammability rating(according to UL 94)	PA/V0				PA/V0			
Operation temperature	°C (°F)		-40(-40)~105(221)		-40(-40)~105(221)		-40(-40)~105(221)	
Stripping length	mm		12-13		12-13		12-13	
Color	Gray (customization demand is available)				Green-yellow			
Slotted screwdriver size (Blade thickness x Width) mm	0.8x5.5				0.8x5.5			
Accessories								
Adjacent jumper (2P)			WFA6		/		/	
Alternate jumper (2P)			WFB6		/		/	
Staggered jumper (2P)			/		/		/	
End cover			D-WS6		D-WS6		D-WS6	
Marker (Top)			ZB8		ZB8		ZB8	
Marker (Side)			/		/		/	
Warning cover			EEA6		EEA6		EEA6	
DIN rail	NS35/7.5 & NS35/15 (Steel and Aluminium alloy are optional)				NS35/7.5 & NS35/15 (Steel and Aluminium alloy are optional)			
End stopper			E-WS&E-PC&E-MK		E-WS&E-PC&E-MK		E-WS&E-PC&E-MK	

Spring-cage connection technology

Feed-through, multi-conductor and ground terminal blocks


WS 6-TW

WS 6-TW-PE

Notes: For additional accessories and operating instruction, see page 61.

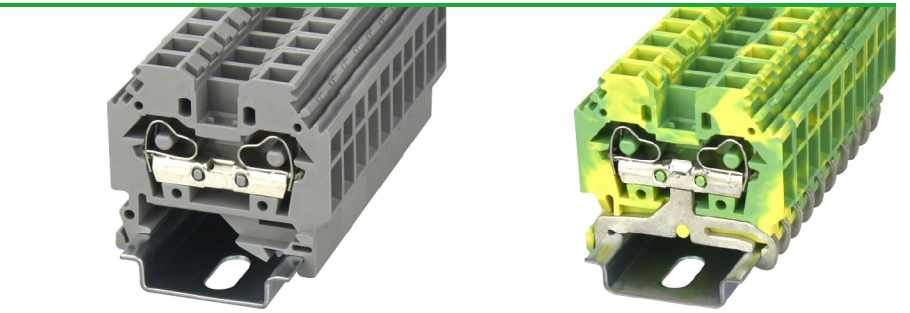
CE ENEC RoHS REACH

CE ENEC RoHS REACH

Dimension		CE ENEC RoHS REACH				CE ENEC RoHS REACH			
Width/Length/Height(NS35/7.5&NS35/15) mm		8/93/40(47.5)				8/93/40(47.5)			
Electrical Parameter		IEC IEC60947-7-1		UL UL1059		IEC IEC60947-7-2		UL UL1059	
Rated voltage	V	800		600		/		/	
Rated current	A	41		30		/		/	
Wire range	mm ² /AWG	0.2-6		24-10		0.2-6		24-10	
Rated surge voltage/Degree of pollution	KV/-	8/3				8/3			
Overvoltage category/Insulation material group	-/-	III / I				III / I			
Connection capacity		Solid	Stranded	Ferrule (with and without plastic sleeve)		Solid	Stranded	Ferrule (with and without plastic sleeve)	
1 conductor	mm ²	0.2-6	0.2-6	0.2-6	0.2-4	0.2-6	0.2-6	0.2-6	0.2-4
2 conductors with same cross section, stranded, TWIN ferrules with plastic sleeve	mm ²	—	—	—	0.5-2.5	—	—	—	0.5-2.5
General information									
Insulation material/Flammability rating(according to UL 94)		PA/V0				PA/V0			
Operation temperature °C (°F)		-40(-40)~105(221)				-40(-40)~105(221)			
Stripping length mm		13-14				13-14			
Color		Gray (customization demand is available)				Green-yellow			
Slotted screwdriver size (Blade thickness x Width) mm		0.8x5.5				0.8x5.5			
Accessories									
Adjacent jumper (2P)		WFA6				/			
Alternate jumper (2P)		WFB6				/			
Staggered jumper (2P)		/				/			
End cover		D-WS6-TW				D-WS6-TW			
Marker (Top)		ZB8				ZB8			
Marker (Side)		/				/			
Warning cover		EEA6				EEA6			
DIN rail		NS35/7.5 & NS35/15 (Steel and Aluminium alloy are optional)				NS35/7.5 & NS35/15 (Steel and Aluminium alloy are optional)			
End stopper		E-WS&E-PC&E-MK				E-WS&E-PC&E-MK			

Spring-cage connection technology

Feed-through, multi-conductor and ground terminal blocks


WS 6-SD

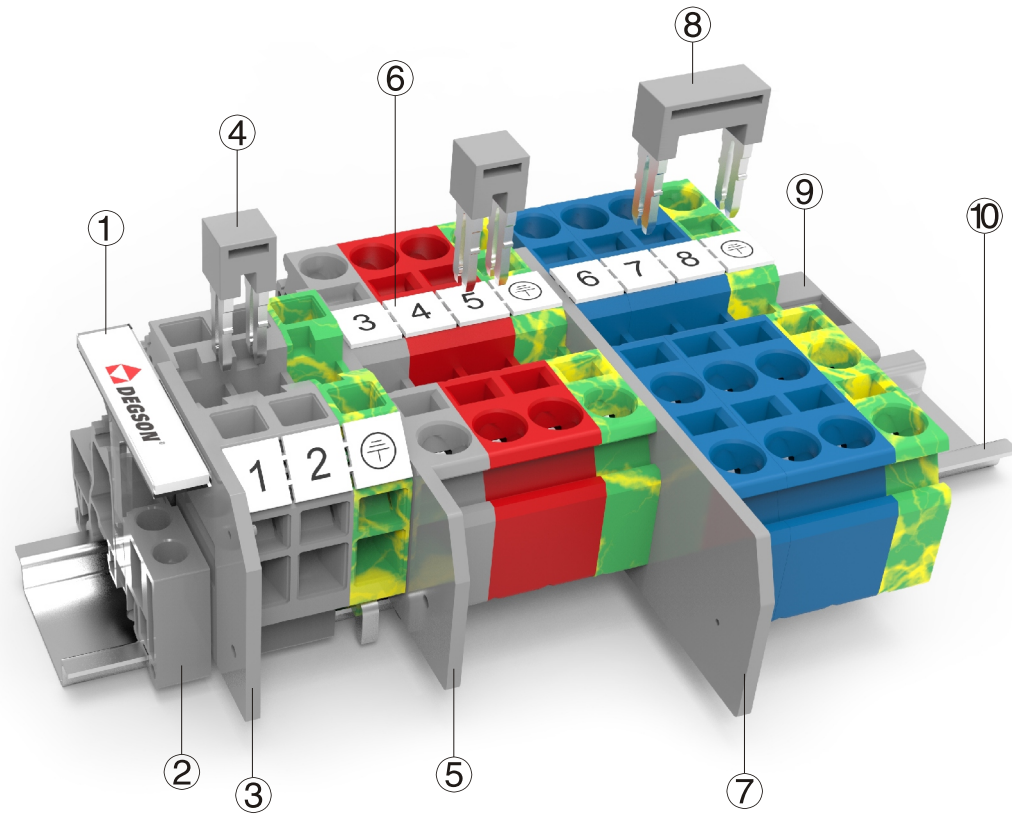
WS 6-SD-PE

Notes: For additional accessories and operating instruction, see page 61.

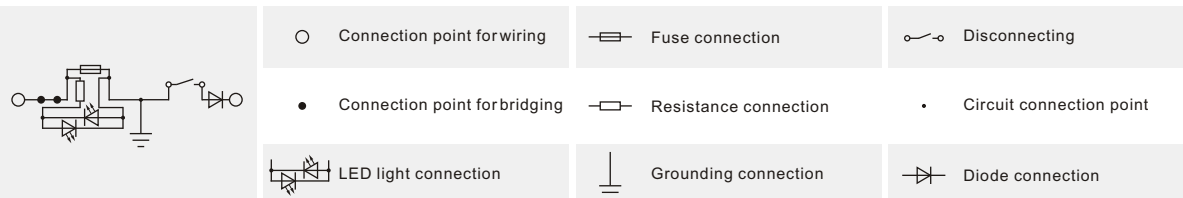
CE ENEC RoHS REACH

CE ENEC RoHS REACH

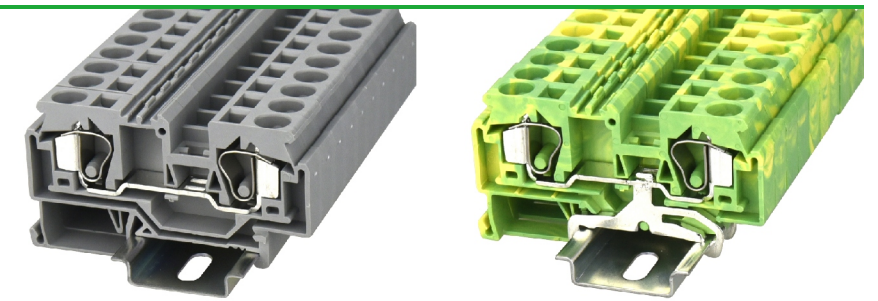
Dimension		CE ENEC RoHS REACH				CE ENEC RoHS REACH			
Width/Length/Height(NS35/7.5&NS35/15) mm		8/46.5/44.5(52)				8/46.5/44.5(52)			
Electrical Parameter		IEC IEC60947-7-1		UL UL1059		IEC IEC60947-7-2		UL UL1059	
Rated voltage	V	800		600		/		/	
Rated current	A	32		20		/		/	
Wire range	mm ² /AWG	0.2-6		24-10		0.2-6		24-10	
Rated surge voltage/Degree of pollution	KV/-	8/3				8/3			
Overvoltage category/Insulation material group	-/-	III / I				III / I			
Connection capacity		Solid	Stranded	Ferrule (with and without plastic sleeve)		Solid	Stranded	Ferrule (with and without plastic sleeve)	
1 conductor	mm ²	0.2-6	0.2-6	0.2-6	0.2-4	0.2-6	0.2-6	0.2-6	0.2-4
2 conductors with same cross section, stranded, TWIN ferrules with plastic sleeve	mm ²	—	—	—	0.5-2.5	—	—	—	0.5-2.5
General information									
Insulation material/Flammability rating(according to UL 94)		PA/V0				PA/V0			
Operation temperature °C (°F)		-40(-40)~105(221)				-40(-40)~105(221)			
Stripping length mm		9-10				9-10			
Color		Gray (customization demand is available)				Green-yellow			
Slotted screwdriver size (Blade thickness x Width) mm		0.8x5.5				0.8x5.5			
Accessories									
Adjacent jumper (2P)		WFA6				/			
Alternate jumper (2P)		WFB6				/			
Staggered jumper (2P)		/				/			
End cover		D-WS6-SD				D-WS6-SD			
Marker (Top)		/				/			
Marker (Side)		ZB8				ZB8			
Warning cover		EEA6				EEA6			
DIN rail		NS35/7.5 & NS35/15 (Steel and Aluminium alloy are optional)				NS35/7.5 & NS35/15 (Steel and Aluminium alloy are optional)			
End stopper		E-WS&E-PC&E-MK				E-WS&E-PC&E-MK			



Description	Part No.	Remark
① Terminalstrip marker carrier	DLM2-01P-17-00A(H)	Suitable for E-PC, use for marking
② End stopper	E-PC-01P-11-1000A(H)	Fixing products on NS35 DIN rail
③ End cover	D-WS10-SD-01P-11-00A(H)	End cover is used for WS10-SD&WS10-SD-PE
④ Adjacent jumper	WFA10-02P-11-00A(H)	02P bridge, use for WS10 series
⑤ End cover	D-WS10-01P-11-00A(H)	End cover is used for WS10&WS10-PE
⑥ Marker	ZB10-10P-19-00A(H)	Marker is used for the top of WS10 series
⑦ End cover	D-WS10-TW-01P-11-00A(H)	End cover is used for WS10-TW&WS10-TW-PE
⑧ Alternate jumper	WFB10-02P-11-00A(H)	02P bridge, use for WS10 series
⑨ End stopper	E-WS-01P-11-00A(H)	Fixing products on NS35 DIN rail
⑩ DIN rail	NS35/7.5-0150-00A(H)	NS35 DIN rail

Circuit diagram

Spring-cage connection technology

Feed-through, multi-conductor and ground terminal blocks


WS 10

WS 10-PE

Notes: For additional accessories and operating instruction, see page 65.

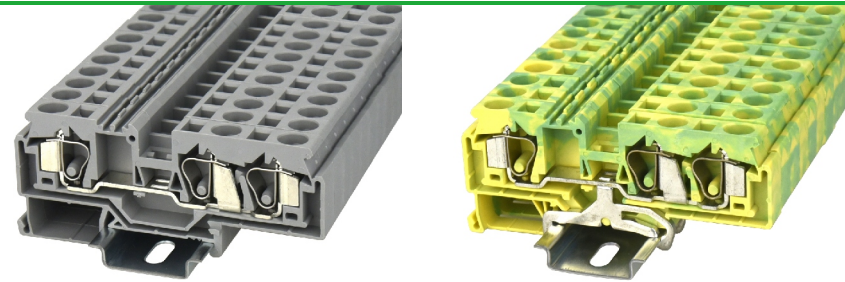
cULus CE ENE RoHS REACH

cULus CE ENE RoHS REACH

Dimension	WS 10				WS 10-PE			
	Width/Length/Height(NS35/7.5&NS35/15) mm		10/77.5/42.5(50)		Width/Length/Height(NS35/7.5&NS35/15) mm		10/77.5/42.5(50)	
Electrical Parameter	IEC IEC60947-7-1		UL UL1059		IEC IEC60947-7-2		UL UL1059	
	Rated voltage	V		800		600		/
Rated current	A		57		50		/	
Wire range	mm ² /AWG		0.2-10		24-8		0.2-10 24-8	
Rated surge voltage/Degree of pollution	KV/-		8/3		8/3		8/3	
Overvoltage category/Insulation material group	-/-		III / 1		III / 1		III / 1	
Connection capacity	Solid	Stranded	Ferrule (with and without plastic sleeve)		Solid	Stranded	Ferrule (with and without plastic sleeve)	
	1 conductor	mm ²	0.2-10	0.2-10	0.2-10	0.2-10	0.2-10	0.2-10
2 conductors with same cross section, stranded, TWIN ferrules with plastic sleeve	mm ²	—	—	—	0.5-4	—	—	0.5-4
General information								
Insulation material/Flammability rating(according to UL 94)	PA/V0				PA/V0			
Operation temperature	°C (°F)		-40(-40)~105(221)		-40(-40)~105(221)		-40(-40)~105(221)	
Stripping length	mm		13-14		13-14		13-14	
Color	Gray (customization demand is available)				Green-yellow			
Slotted screwdriver size (Blade thickness x Width) mm	0.8x5.5				0.8x5.5			
Accessories								
Adjacent jumper (2P)	WFA10		/		/		/	
Alternate jumper (2P)	WFB10		/		/		/	
Staggered jumper (2P)	/		/		/		/	
End cover	D-WS10		D-WS10		D-WS10		D-WS10	
Marker (Top)	ZB10		ZB10		ZB10		ZB10	
Marker (Side)	/		/		/		/	
Warning cover	EEA10		EEA10		EEA10		EEA10	
DIN rail	NS35/7.5 & NS35/15 (Steel and Aluminium alloy are optional)				NS35/7.5 & NS35/15 (Steel and Aluminium alloy are optional)			
End stopper	E-WS&E-PC&E-MK		E-WS&E-PC&E-MK		E-WS&E-PC&E-MK		E-WS&E-PC&E-MK	

Spring-cage connection technology

Feed-through, multi-conductor and ground terminal blocks


WS 10-TW

WS 10-TW-PE

Notes: For additional accessories and operating instruction, see page 65.

CE ENEC RoHS REACH

CE ENEC RoHS REACH

Dimension		CE ENEC RoHS REACH				CE ENEC RoHS REACH			
Width/Length/Height(NS35/7.5&NS35/15) mm		10/97.5/42.5(50)				10/97.5/42.5(50)			
Electrical Parameter		IEC IEC60947-7-1		UL UL1059		IEC IEC60947-7-2		UL UL1059	
Rated voltage	V	800		600		/		/	
Rated current	A	57		50		/		/	
Wire range	mm ² /AWG	0.2-10		24-8		0.2-10		24-8	
Rated surge voltage/Degree of pollution	KV/-	8/3				8/3			
Overvoltage category/Insulation material group	-/-	III / I				III / I			
Connection capacity		Solid	Stranded	Ferrule (with and without plastic sleeve)		Solid	Stranded	Ferrule (with and without plastic sleeve)	
1 conductor	mm ²	0.2-10	0.2-10	0.2-10	0.2-10	0.2-10	0.2-10	0.2-10	0.2-10
2 conductors with same cross section, stranded, TWIN ferrules with plastic sleeve	mm ²	—	—	—	0.5-4	—	—	—	0.5-4
General information									
Insulation material/Flammability rating(according to UL 94)		PA/V0				PA/V0			
Operation temperature °C (°F)		-40(-40)~105(221)				-40(-40)~105(221)			
Stripping length mm		13-14				13-14			
Color		Gray (customization demand is available)				Green-yellow			
Slotted screwdriver size (Blade thickness x Width) mm		0.8x5.5				0.8x5.5			
Accessories									
Adjacent jumper (2P)		WFA10				/			
Alternate jumper (2P)		WFB10				/			
Staggered jumper (2P)		/				/			
End cover		D-WS10-TW				D-WS10-TW			
Marker (Top)		ZB10				ZB10			
Marker (Side)		/				/			
Warning cover		EEA10				EEA10			
DIN rail		NS35/7.5 & NS35/15 (Steel and Aluminium alloy are optional)				NS35/7.5 & NS35/15 (Steel and Aluminium alloy are optional)			
End stopper		E-WS&E-PC&E-MK				E-WS&E-PC&E-MK			

Spring-cage connection technology

Feed-through, multi-conductor and ground terminal blocks


WS 10-SD

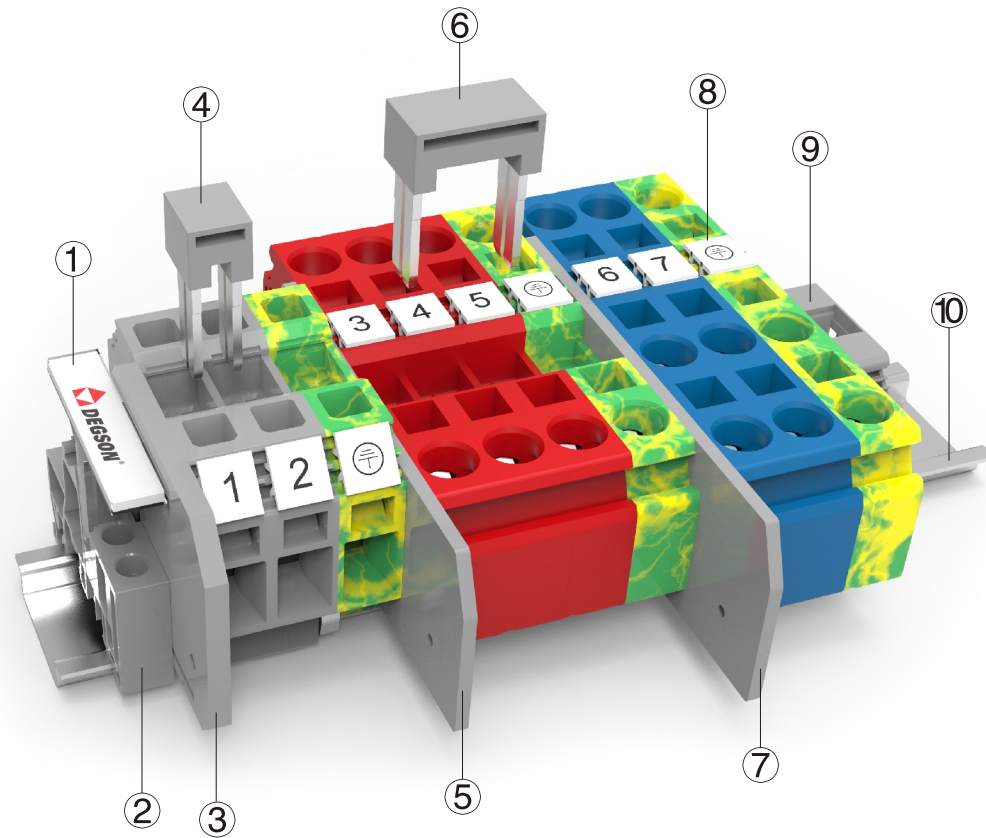
WS 10-SD-PE

Notes: For additional accessories and operating instruction, see page 65.

CE ENEC RoHS REACH

CE ENEC RoHS REACH

Dimension		CE ENEC RoHS REACH				CE ENEC RoHS REACH			
Width/Length/Height(NS35/7.5&NS35/15) mm		10/52/49(56.5)				10/52/49(56.5)			
Electrical Parameter		IEC IEC60947-7-1		UL UL1059		IEC IEC60947-7-2		UL UL1059	
Rated voltage	V	800		600		/		/	
Rated current	A	57		50		/		/	
Wire range	mm ² /AWG	0.2-10		24-8		0.2-6		24-10	
Rated surge voltage/Degree of pollution	KV/-	8/3				8/3			
Overvoltage category/Insulation material group	-/-	III / I				III / I			
Connection capacity		Solid	Stranded	Ferrule (with and without plastic sleeve)		Solid	Stranded	Ferrule (with and without plastic sleeve)	
1 conductor	mm ²	0.2-10	0.2-10	0.2-10	0.2-6.0	0.2-10	0.2-10	0.2-10	0.2-6.0
2 conductors with same cross section, stranded, TWIN ferrules with plastic sleeve	mm ²	—	—	—	0.5-4	—	—	—	0.5-4
General information									
Insulation material/Flammability rating(according to UL 94)		PA/V0				PA/V0			
Operation temperature °C (°F)		-40(-40)~105(221)				-40(-40)~105(221)			
Stripping length mm		13-14				13-14			
Color		Gray (customization demand is available)				Green-yellow			
Slotted screwdriver size (Blade thickness x Width) mm		0.8x5.5				0.8x5.5			
Accessories									
Adjacent jumper (2P)		WFA10				/			
Alternate jumper (2P)		WFB10				/			
Staggered jumper (2P)		/				/			
End cover		D-WS10-SD				D-WS10-SD			
Marker (Top)		/				/			
Marker (Side)		ZB10				ZB10			
Warning cover		EEA10				EEA10			
DIN rail		NS35/7.5 & NS35/15 (Steel and Aluminium alloy are optional)				NS35/7.5 & NS35/15 (Steel and Aluminium alloy are optional)			
End stopper		E-WS&E-PC&E-MK				E-WS&E-PC&E-MK			



Description	Part No.	Remark
① Terminalstrip marker carrier	DLM2-01P-17-00A(H)	Suitable for E-PC, use for marking
② End stopper	E-PC-01P-11-1000A(H)	Fixing products on NS35 DIN rail
③ End cover	D-WS16-SD-01P-11-00A(H)	End cover is used for WS16-SD&WS16-SD-PE
④ Adjacent jumper	WFA16-02P-11-00A(H)	02P bridge, use for WS16 series
⑤ End cover	D-WS16-01P-11-00A(H)	End cover is used for WS16&WS16-PE
⑥ Alternate jumper	WFB16-02P-11-00A(H)	02P bridge, use for WS16 series
⑦ End cover	D-WS16-TW-01P-11-00A(H)	End cover is used for WS16-TW&WS16-TW-PE
⑧ Marker	ZB10-10P-19-00A(H)	Marker is used for the top of WS16 series
⑨ End stopper	E-WS-01P-11-00A(H)	Fixing products on NS35 DIN rail
⑩ DIN rail	NS35/7.5-0150-00A(H)	NS35 DIN rail

Circuit diagram			
	Connection point for wiring		Fuse connection
	Connection point for bridging		Resistance connection
	LED light connection		Grounding connection
	Disconnecting		Circuit connection point
	Diode connection		

Spring-cage connection technology

Feed-through, multi-conductor and ground terminal blocks


WS 16

WS 16-PE

Notes: For additional accessories and operating instruction, see page 69.

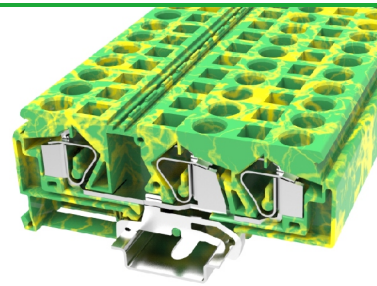
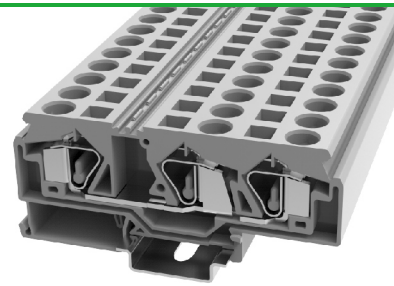
UL US CE ENE RoHS REACH

CE ENE RoHS REACH

Dimension	WS 16				WS 16-PE			
	Width/Length/Height(NS35/7.5&NS35/15) mm		12/94.5/45(52.5)		Width/Length/Height(NS35/7.5&NS35/15) mm		12/94.5/45(52.5)	
Electrical Parameter	IEC IEC60947-7-1		UL UL1059		IEC IEC60947-7-2		UL UL1059	
	Rated voltage	V		800		600		/
Rated current	A		76		65		/	
Wire range	mm ² /AWG		0.2-16		24-6		0.2-16 24-6	
Rated surge voltage/Degree of pollution	KV/-		8/3		8/3		8/3	
Overvoltage category/Insulation material group	-/-		III / I		III / I		III / I	
Connection capacity	Solid		Stranded		Ferrule (with and without plastic sleeve)		Solid	
	mm ²		mm ²		mm ²		mm ²	
1 conductor	0.2-16		0.2-16		0.2-16 0.2-10		0.2-16 0.2-10	
2 conductors with same cross section, stranded, TWIN ferrules with plastic sleeve	mm ²		—		— 0.5-6		— 0.5-6	
General information								
Insulation material/Flammability rating(according to UL 94)	PA/V0				PA/V0			
Operation temperature	°C (°F)		-40(-40)~105(221)		-40(-40)~105(221)		-40(-40)~105(221)	
Stripping length	mm		17-18		17-18		17-18	
Color	Gray (customization demand is available)				Green-yellow			
Slotted screwdriver size (Blade thickness x Width) mm	0.8x5.5				0.8x5.5			
Accessories								
Adjacent jumper (2P)			WFA16		/		/	
Alternate jumper (2P)			WFB16		/		/	
Staggered jumper (2P)			/		/		/	
End cover			D-WS16		D-WS16		D-WS16	
Marker (Top)			ZB10		ZB10		ZB10	
Marker (Side)			/		/		/	
Warning cover			EEA16		EEA16		EEA16	
DIN rail	NS35/7.5 & NS35/15 (Steel and Aluminium alloy are optional)				NS35/7.5 & NS35/15 (Steel and Aluminium alloy are optional)			
End stopper			E-WS&E-PC&E-MK		E-WS&E-PC&E-MK		E-WS&E-PC&E-MK	

Spring-cage connection technology

Feed-through, multi-conductor and ground terminal blocks


WS 16-TW
WS 16-TW-PE

Notes: For additional accessories and operating instruction, see page 69.

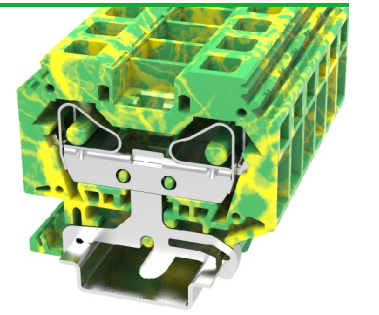
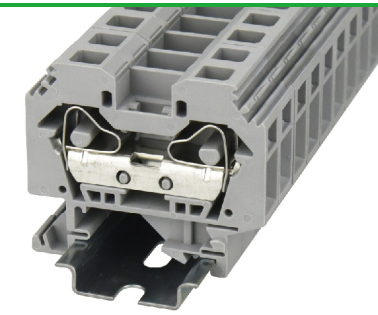
CE ENEC RoHS REACH

CE ENEC RoHS REACH

Dimension		CE ENEC RoHS REACH				CE ENEC RoHS REACH			
Width/Length/Height(NS35/7.5&NS35/15) mm		12/104.5/45(52.5)				12/104.5/45(52.5)			
Electrical Parameter		IEC IEC60947-7-1		UL UL1059		IEC IEC60947-7-2		UL UL1059	
Rated voltage	V	800		600		/		/	
Rated current	A	76		65		/		/	
Wire range	mm ² /AWG	0.2-16		24-6		0.2-16		24-6	
Rated surge voltage/Degree of pollution	KV/-	8/3				8/3			
Overvoltage category/Insulation material group	-/-	III / I				III / I			
Connection capacity		Solid	Stranded	Ferrule (with and without plastic sleeve)		Solid	Stranded	Ferrule (with and without plastic sleeve)	
1 conductor	mm ²	0.2-16	0.2-16	0.2-16	0.2-10	0.2-16	0.2-16	0.2-16	0.2-10
2 conductors with same cross section, stranded, TWIN ferrules with plastic sleeve	mm ²	—	—	—	0.5-6	—	—	—	0.5-6
General information									
Insulation material/Flammability rating(according to UL 94)		PA/V0				PA/V0			
Operation temperature °C (°F)		-40(-40)~105(221)				-40(-40)~105(221)			
Stripping length mm		16-17				16-17			
Color		Gray (customization demand is available)				Green-yellow			
Slotted screwdriver size (Blade thickness x Width) mm		0.8x5.5				0.8x5.5			
Accessories									
Adjacent jumper (2P)		/				/			
Alternate jumper (2P)		/				/			
Staggered jumper (2P)		/				/			
End cover		D-WS16-TW				D-WS16-TW			
Marker (Top)		ZB10				ZB10			
Marker (Side)		/				/			
Warning cover		EEA16				EEA16			
DIN rail		NS35/7.5 & NS35/15 (Steel and Aluminium alloy are optional)				NS35/7.5 & NS35/15 (Steel and Aluminium alloy are optional)			
End stopper		E-WS&E-PC&E-MK				E-WS&E-PC&E-MK			

Spring-cage connection technology

Feed-through, multi-conductor and ground terminal blocks

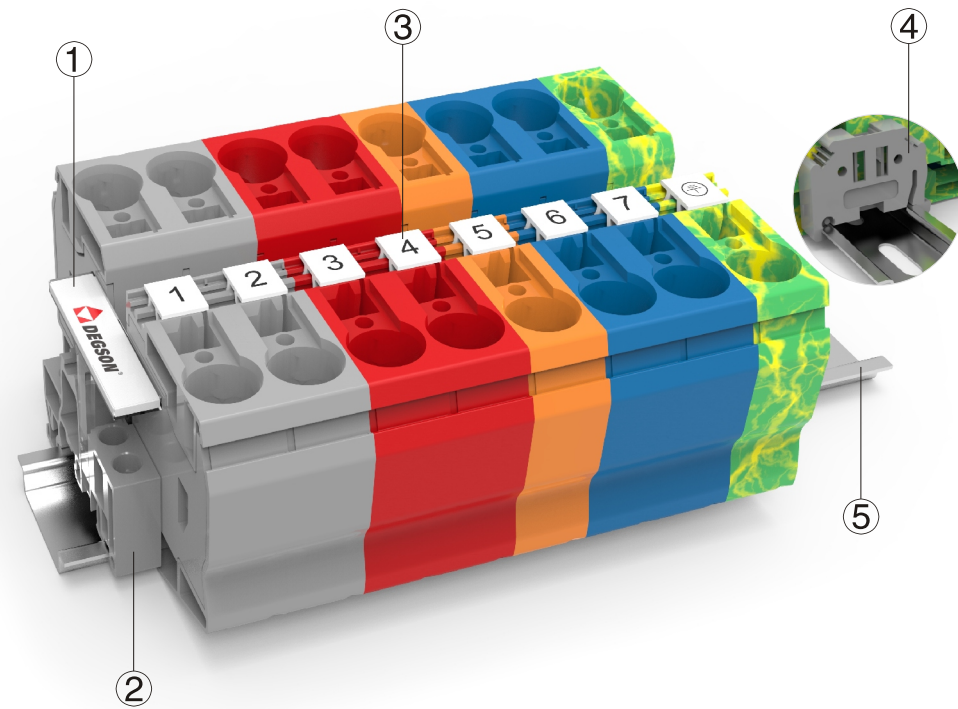

WS 16-SD
WS 16-SD-PE

Notes: For additional accessories and operating instruction, see page 69.

CE ENEC RoHS REACH

CE ENEC RoHS REACH

Dimension		CE ENEC RoHS REACH				CE ENEC RoHS REACH			
Width/Length/Height(NS35/7.5&NS35/15) mm		12/58/52.6(60.1)				12/58/52.6(60.1)			
Electrical Parameter		IEC IEC60947-7-1		UL UL1059		IEC IEC60947-7-2		UL UL1059	
Rated voltage	V	800		600		/		/	
Rated current	A	76		65		/		/	
Wire range	mm ² /AWG	0.2-16		24-6		0.2-16		24-6	
Rated surge voltage/Degree of pollution	KV/-	8/3				8/3			
Overvoltage category/Insulation material group	-/-	III / I				III / I			
Connection capacity		Solid	Stranded	Ferrule (with and without plastic sleeve)		Solid	Stranded	Ferrule (with and without plastic sleeve)	
1 conductor	mm ²	0.2-16	0.2-16	0.2-16	0.2-10	0.2-16	0.2-16	0.2-16	0.2-10
2 conductors with same cross section, stranded, TWIN ferrules with plastic sleeve	mm ²	—	—	—	0.5-6	—	—	—	0.5-6
General information									
Insulation material/Flammability rating(according to UL 94)		PA/V0				PA/V0			
Operation temperature °C (°F)		-40(-40)~105(221)				-40(-40)~105(221)			
Stripping length mm		16-17				16-17			
Color		Gray (customization demand is available)				Green-yellow			
Slotted screwdriver size (Blade thickness x Width) mm		0.8x5.5				0.8x5.5			
Accessories									
Adjacent jumper (2P)		WFA16				/			
Alternate jumper (2P)		WFB16				/			
Staggered jumper (2P)		/				/			
End cover		D-WS16-SD				D-WS16-SD			
Marker (Top)		/				/			
Marker (Side)		ZB10				ZB10			
Warning cover		EEA16				EEA16			
DIN rail		NS35/7.5 & NS35/15 (Steel and Aluminium alloy are optional)				NS35/7.5 & NS35/15 (Steel and Aluminium alloy are optional)			
End stopper		E-WS&E-PC&E-MK				E-WS&E-PC&E-MK			



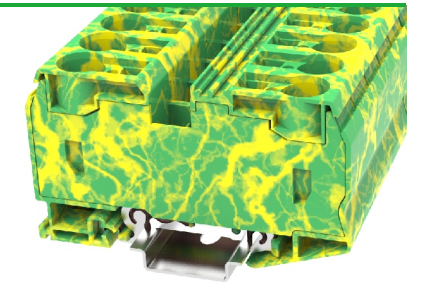
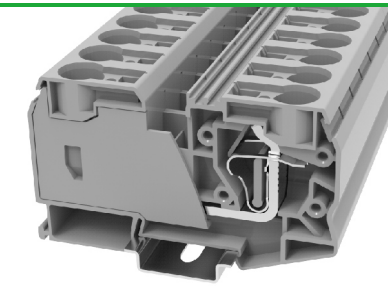
Description	Part No.	Remark
① Terminal strip marker carrier	DLM2-01P-17-00A(H)	Suitable for E-PC, use for marking
② End stopper	E-PC-01P-11-1000A(H)	Fixing products on NS35 DIN rail
③ Marker	ZB10-10P-19-00A(H)	Marker is used for the top of WS35 series
④ End stopper	E-WS-01P-11-00A(H)	Fixing products on NS35 DIN rail
⑤ DIN rail	NS35/7.5-0150-00A(H)	NS35 DIN rail

Circuit diagram

	Connection point for wiring		Fuse connection		Disconnecting
	Connection point for bridging		Resistance connection		Circuit connection point
	LED light connection		Grounding connection		Diode connection

Spring-cage connection technology

Feed-through and ground terminal blocks



WS 35



WS 35-PE

Notes: For additional accessories and operating instruction, see page 73.

CE ENEC RoHS REACH

CE ENEC RoHS REACH

Dimension	CE ENEC RoHS REACH				CE ENEC RoHS REACH					
	16/99.9/59.2(66.7)				16/99.9/59.2(66.7)					
Electrical Parameter	IEC IEC60947-7-1		UL UL1059		IEC IEC60947-7-2		UL UL1059			
	Rated voltage	V		1000		600		/		
Rated current	A		125		115		/			
Wire range	mm ² /AWG		0.5-35		14-2		0.5-35 14-2			
Rated surge voltage/Degree of pollution	KV/-		8/3		8/3		8/3			
Overvoltage category/Insulation material group	-/-		III / I		III / I		III / I			
Connection capacity	Solid	Stranded	Ferrule (with and without plastic sleeve)		Solid	Stranded	Ferrule (with and without plastic sleeve)			
	1 conductor	mm ²	2.5-35	2.5-35	2.5-35	2.5-35	2.5-35	2.5-35		
2 conductors with same cross section, stranded, TWIN ferrules with plastic sleeve	mm ²	—	—	—	0.5-6	—	—	0.5-6		
General information										
Insulation material/Flammability rating(according to UL 94)	PA/V0				PA/V0					
Operation temperature	°C (°F)		-40(-40)~105(221)				-40(-40)~105(221)			
Stripping length	mm		25				25			
Color	Gray (customization demand is available)				Green-yellow					
Slotted screwdriver size (Blade thickness x Width)	mm		1x5.5				1x5.5			
Accessories										
Adjacent jumper (2P)	/				/					
Alternate jumper (2P)	/				/					
Staggered jumper (2P)	/				/					
End cover	/				/					
Marker (Top)			ZB10		ZB10		ZB10			
Marker (Side)	/				/					
Warning cover	/				/					
DIN rail	NS35/7.5 & NS35/15 (Steel and Aluminium alloy are optional)				NS35/7.5 & NS35/15 (Steel and Aluminium alloy are optional)					
End stopper			E-WS&E-PC&E-MK		E-WS&E-PC&E-MK		E-WS&E-PC&E-MK			